



# Nelson HOMES™



*Trusted Quality and Service  
Since 1949*

[www.nlc.ca](http://www.nlc.ca)



# Table Of Contents



<b>History Of Nelson Homes</b> .....	<b>1</b>
<b>The Company Today</b> .....	<b>1</b>
<b>The Company</b> .....	<b>2</b>
<b>Quality Products</b> .....	<b>3</b>
<b>Why A Nelson RTM?</b> .....	<b>4</b>
<b>Customizing Your Dream Home</b> .....	<b>4</b>
<b>A Better Way To Build</b> .....	<b>5</b>
<b>Nelson Energy Wall</b> .....	<b>5</b>
<b>Nelson Homes Authorized Dealers</b> .....	<b>6</b>
<b>Bungalow Plans</b> .....	<b>7</b>
Acacia.....8 Eastwood.....20 Abilene.....32 Douglas.....44 Dryden.....56	
Weston.....9 Rainier.....21 Sydney.....33 Bronson.....45 Fairfield.....57	
McKinley.....10 Hawksdale.....22 Citation.....34 Norquay.....46 Ardmore.....58	
April.....11 Oakville.....23 Donovan.....35 Cheyenne.....47 Brookside.....59	
Taran.....12 Havenport.....24 Richmond.....36 Valemount.....48 Olympia.....60	
Denver.....13 Blue Ridge.....25 Brooklyn.....37 Aurora.....49 Manitou.....61	
Rowan.....14 Jacob.....26 Ryan.....38 McKenzie.....50 Cyprus.....62	
Knox.....15 Paragon.....27 Chestnut.....39 Kensington.....51 Raymond.....63	
Alida.....16 Embrook.....28 Harlowe.....40 Wingate.....52 Blackburn.....64	
Daley.....17 Brantwell.....29 Midland.....41 Meadowbrook.....53	
Rocklyn.....18 Sycamore.....30 Heston.....42 Calder.....54	
Castleguard.....19 Jackson.....31 Orion.....43 Oslo.....55	
<b>Bi-Level Plans</b> .....	<b>65</b>
Allen.....66 Garrick.....68 Keystone.....70 Aldwyn.....72	
Camile.....67 Hailey.....69 Rutherford.....71	
<b>Two-Storey Plans</b> .....	<b>73</b>
Courtney.....74 Inglewood.....80 Winston.....86 Ashbury.....93 Morrison.....99	
Stratton.....75 Carmichael.....81 Sienna.....87 Branston.....94 Chancellor.....100	
Denton.....76 Victory.....82 Chestermere.....88 Santana.....95 Kimball.....102	
Fulton.....77 Metropolitan.....83 Arizona.....90 Royale.....96	
Lethbridge.....78 Nicholson.....84 Trinity.....91 Tryston.....97	
Wendel.....79 Fairmont.....85 Leighton.....92 Thompson.....98	
<b>Secondary Dwelling Unit Plans</b> .....	<b>103</b>
Aries.....104 Mensa.....106 Perseus.....108 Thorington.....110 Southport.....112	
Taurus.....105 Libra.....107 Pisces.....109 Newcastle.....111	
<b>Duplex Plans</b> .....	<b>113</b>
Bayfield.....114 Vermilion.....115 Apex.....116 Rockford.....117 Ridgedale.....118	
<b>Cottage Plans</b> .....	<b>119</b>
Cottonwood.....120 Sutton.....123 Glenmore.....126 Williamsburg.....129 River Ridge.....132	
Norfolk.....121 Summerset.....124 Willowbrook.....127 Kootenay.....130 Chateau Ridge.....133	
Sylvan.....122 Everest.....125 Jasper.....128 Timberview.....131	
<b>Index</b> .....	<b>Inside Back Cover</b>
<b>Contact Information</b> .....	<b>Back Cover</b>

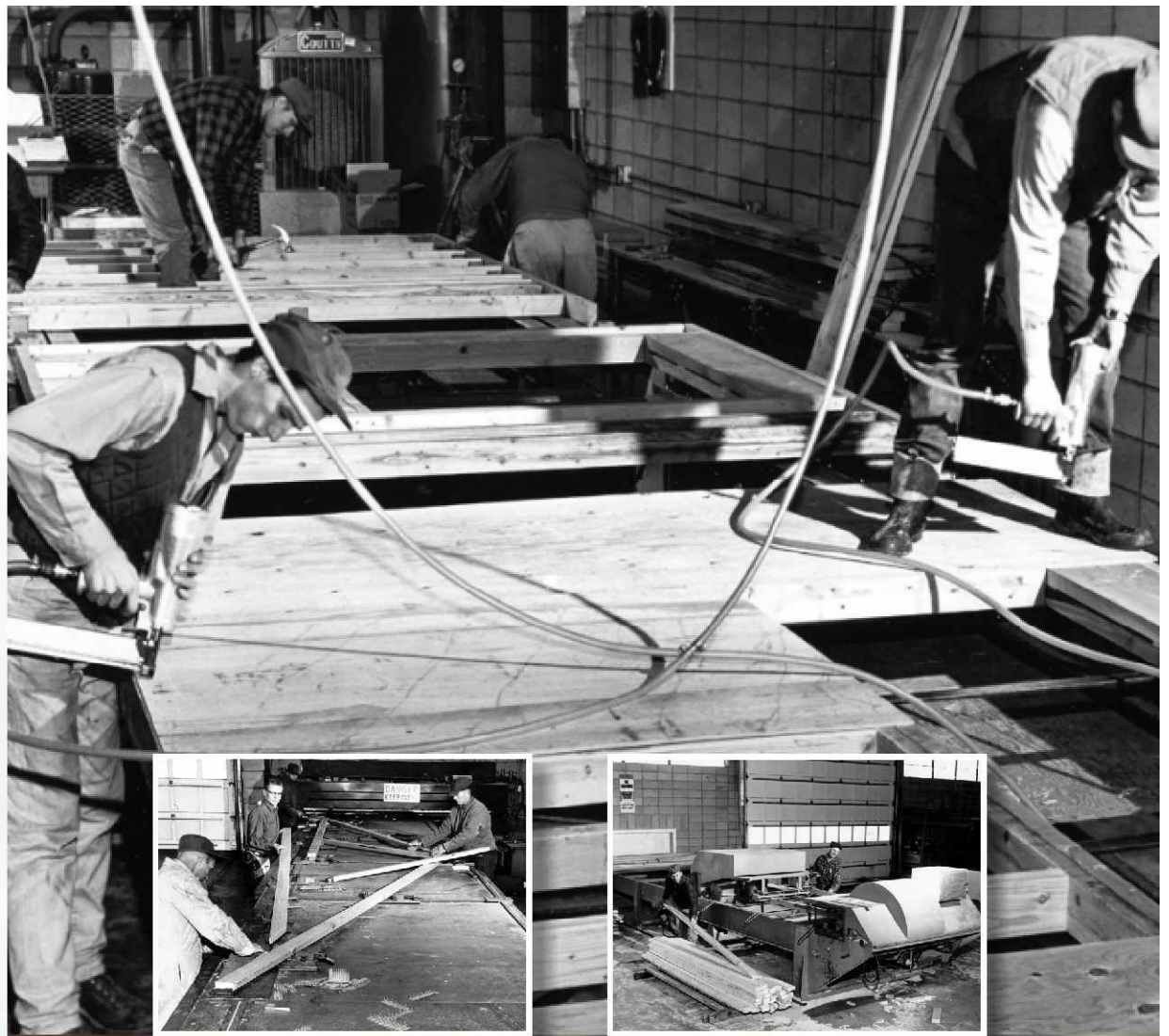


# HISTORY OF NELSON HOMES...

On March 1, 1949 brothers Ray and Austin Nelson opened a small lumber yard in Lloydminster, Alberta; they called it Nelson Lumber. Their motto was simple; "Give people always - top quality and more for their money." Business flourished, but the brothers soon realized that people needed more than just lumber and good advice with which to build homes. Their vision was to provide a complete home building service - from well crafted designs- to the manufacturing of the components and the delivery of a total package to the customer's job site.

In 1958 a separate division, Nelson Homes, was started. The convenience of the package system was well received in areas where construction labour and efficient delivery were difficult to come by.

The Nelson's reputation for quality and convenience grew. More Nelson Lumber stores were opened. To keep up with widespread demand, Nelson began offering Authorized Dealerships throughout North America.



# THE COMPANY TODAY...

Nelson Homes has grown to be Canada's largest home manufacturer and a trusted leader in the industry. More than 45,000 homes, ranging in size from 600 to 14,000 square feet, as well as numerous multi-unit and commercial buildings have been produced.

The comprehensive product line-up now includes housing solutions ranging from complete home packages, Ready-To-Move Homes, multi-family buildings, adult housing and care homes, as well as materials for agricultural and commercial buildings.

In 2003, Ray Nelson transferred the ownership of the company to a group of long-time employees, who continue to carry on the Nelson legacy. Their promise is continued commitment to quality, craftsmanship, and integrity.

**NELSON LUMBER STORES**  
Serving Northern Alberta  
Edmonton • Grande Prairie  
Lloydminster • Slave Lake



**NELSON MANUFACTURING**  
3 plants with over 200,000  
square feet for component building



**NELSON HOMES**  
Over 100 Authorized Dealers  
serving North America and abroad



**NELSON HOMES**  
Delivering complete homes  
throughout Alberta and Saskatchewan





# RESIDENTIAL



*Nelson Home Package*



*Custom Cabin Countryside Homes, OR*

Nelson Homes has skilled designers and drafts-people who will modify your plan or build the custom design of your choice.

# COMMERCIAL



*Dr. Hemstock Seniors Residence, Lloydminster*



*Ramada, Lloydminster*

Nelson has the capability to panelize large commercial projects. With their efficient building system, framing time and labour are greatly reduced.

# MULTI-FAMILY



*Horizon Village, Lloydminster*



*Duplex, Malmstrom Airbase*

Nelson has many years of experience in building packages for multi-unit homes, such as duplexes and four-plexes, care homes and assisted living residences. The panelized system works well for any sized wood-frame building project.

# EXPORT



*Japan Home*



*Assembling Nelson panelized walls in Japan*

Nelson Homes' international distribution includes the USA, as well as shipments to China, Japan, Iceland, Germany, Hungary, Czech Republic, Ireland, Russia, and Ukraine. Building codes in each area are strictly adhered to.



## ROOF TRUSSES

Nelson manufactures engineered roof trusses in state-of-the-art truss factories. Drawings are transferred to computerized omni-saws and laser guided truss jigs,



ensuring accurate cuts so component joints fit tightly together. Even complex systems, like dual pitch, parallel chord or hockey stick trusses fit together with precision.

## FLOOR SYSTEMS

Nelson utilizes two types of engineered floor systems: the I Joist and its own Open Web truss design. The open web allows for longer floor spans - up to 22 ft. The web design will



minimize floor "bounce" and makes for a strong, quiet floor. Ductwork can be hidden in the open web design often eliminating "bulkheads" in basement ceilings.

## COMPLETE PACKAGES

The complete home package is designed to make building a new home go smoothly, saving you time and headaches. It is a convenient, one-stop service, where



people with years of experience handle all of the major details. The package consists of everything you need to get your home to the secure lock-up stage... and beyond, including roof, floor and wall systems, exterior

finishes, windows, doors and more.

## QUALITY LUMBER

Nelson Homes uses only top grade, Canadian, kiln dried lumber, selected directly from lumber mills. Factory workers keep an eye out for imperfections and reject any lumber



that doesn't adhere to Nelson's strict standards. Experienced purchasers research windows, doors and other materials, ensuring that you get the best value and most innovative products from reputable suppliers who stand behind their products.

## PANELIZED WALLS

Made to measure exterior and interior wall panels are built using only top grade lumber. Panels come in pre-built sections, have framed-in window and door openings, and



OSB sheathing applied - ensuring quick framing time, lower labour cost and less material waste.

Components are numbered and cross-referenced with the blueprints for quick assembly at your job site.

## DELIVERY

You'll get a delivery date, which makes for efficient scheduling of contractors. Custom drop-deck and enclosed trailers are used for shipping to conventional building sites.



For remote areas, material packages are delivered by barge, train, helicopter or by plane. Home packages for overseas are shipped in large container vessels.



# WHY A RTM?

Our Nelson Ready to Move Homes are built with the same Nelson panel packages that are sent worldwide. Our homes are not modular, nor are they a mobile home, these homes are built with the same material and quality control that Nelson has always been known for. With 2x6 / 2x8 exterior construction and interior finish that rivals any homes built on site, our Ready to Move Homes, are just that - houses, that are constructed to be moved to your site in one piece and rolled onto your awaiting foundation. We also offer the Vanguard series, which are fully self-contained units with 50 gallon electric water heaters and natural gas high efficiency forced air furnaces. Simply install the beam(s) and piles and hook up the services.

Our homes are built by skilled tradesman on our build sites. As these trades come to our site on a daily basis, we are able to keep the overall costs in check and eliminate the travel costs that most would pay for out of town construction.

We have taken what can be a stressful complicated process for you, and turned it into a well orchestrated system that ensures your home arrives on time and you are moving in sooner.

Please feel free to visit our sites at High River, Lloydminster and our distribution centers to see the quality Nelson is known for. Building an RTM with us means less stress for you and more time to enjoy your new home.



## CUSTOMIZING YOUR DREAM HOME...

### Whether You Choose an RTM or Panelized Package

At Nelson Homes we offer a wide variety of standard home plans. Because 'standard' doesn't work for everyone these plans can easily be modified to reach your individual needs and wants. Use the ideas in this catalogue and on our website to find the styles and features that appeal to you.

Working with one of our Authorized Dealers or Sales Agents your design ideas will be brought together to make your perfect home. Nelson works with a talented team of drafts people capable of any change, either to our tried and tested standard plans, or using your unique visions to customize a plan specific to you. You get the assurance that your home plan is designed and manufactured in accordance with the National Building Code. We will work with you to ensure that all local code requirements are adhered to and noted in your custom design. Your Authorized Dealer or Sales Agent will not only assist with your design, but offer advice and expertise in the hundreds of products and options available to you. We strive to give your home or building project the attention to detail that it deserves.

Alternatively if you already have a custom home plan we will work with you to ensure those same regional and national standards are being met. Nelson Homes can manufacture a building package for your own custom plans.

For more information on customizing any of the Nelson plans or to begin drafting out your dreams, contact Nelson Homes at 1.800.661.6534.





# A BETTER WAY TO BUILD

## The Nelson Panelized System

- A complete framing system, built with top grade Canadian kiln-dried lumber
- Components are factory built, using state-of-the-art technology to ensure accuracy
- Delivered to your building site within weeks of ordering
- Ability to be your own builder
- Build green with less waste and environmentally friendly materials

## Why is Panelized Better?

### Climate controlled production

- Roof and floor trusses, wall panels and stairs are manufactured in factories keeping the lumber out of the elements. The results... less warping, twisting and swelling
- Walls will be straighter, you'll have fewer problems with nail pops, ceiling or corner cracks

### Cost Savings

- Less labour required to erect structure - independent research shows a reduction of as much as 60% of framing time
- Guaranteed price upfront; no surprises, no costly overruns on materials
- Less clean-up costs at site due to reduced waste
- Less job site theft

### Excellent Quality

- Manufacturing adheres to strict building standards and codes; components are thoroughly inspected at every stage
- Specialized computer equipment ensures precision-built components
- Even the most complex roof systems are built to fit precisely



## NELSON ENERGY WALL

The Nelson Energy Wall system is our latest innovation in energy efficiency and **GREEN** building.

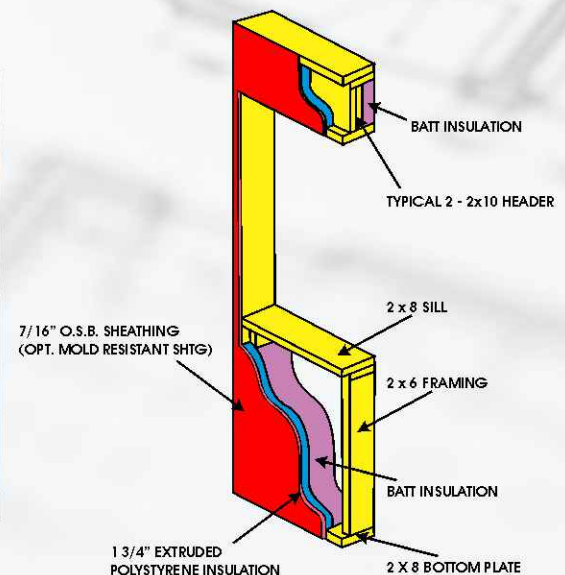
This product option compliments the industry leading Nelson Homes system built package.

### What it is...

- Factory assembled wall system
- Factory applied 1 3/4" rigid extruded polystyrene insulation that creates a thermal break (no cold studs)

### What it does...

- Reduces heat loss
- Exterior sheathing allows for easy installation of any type of siding
- Increases R-Value
- Eliminates on site costs for installing rigid installation
- Complies with NBC 2015 Energy Code





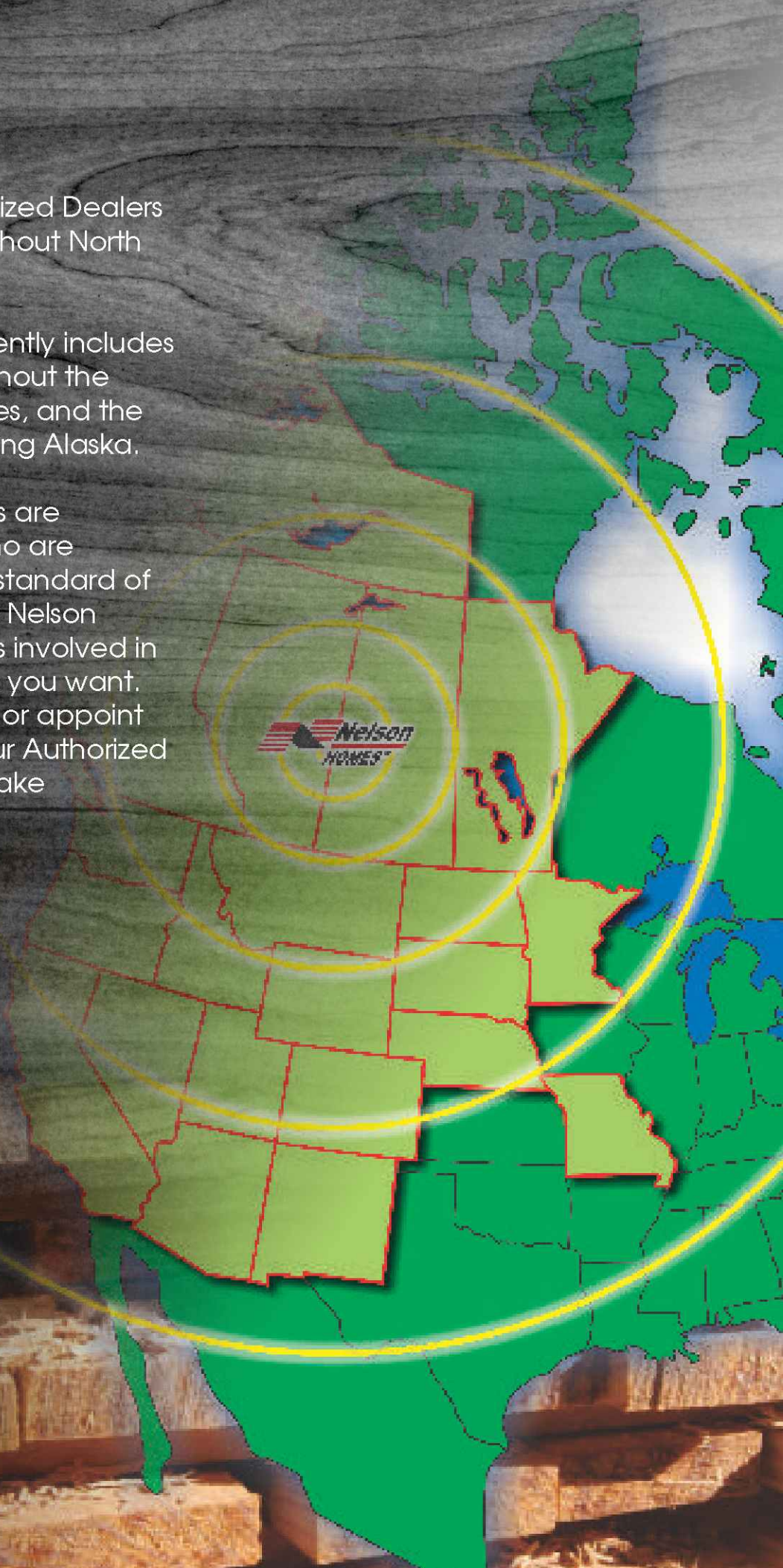
# NELSON HOMES AUTHORIZED DEALERS

Nelson Homes are sold by Authorized Dealers and Sales Agents located throughout North America.

The growing dealer network currently includes over 100 dealers, located throughout the Canadian provinces, the Territories, and the west-central United States including Alaska.

Nelson Homes Authorized Dealers are independent business people who are committed to continue the high standard of service that has always been the Nelson Homes trademark. You can be as involved in the construction of your home as you want. You may build the home yourself or appoint your own general contractor. Your Authorized Dealer may build the home or make suggestions for sub-trades.

Visit [www.nlc.ca](http://www.nlc.ca)  
or call us toll free at  
1.800.661.6534  
and we will put you in  
touch with a dealer near you.





# BUNGALOWS



Name	SQ. FT.	Page No.
Acacia	952	8
Weston	1,054	9
McKinley	1,064	10
April	1,080	11
Taran	1,120	12
Denver	1,124	13
Rowan	1,176	14
Knox	1,236	15
Alida	1,273	16
Daley	1,274	17
Rocklyn	1,274	18
Castleguard	1,288	19
Eastwood	1,293	20
Rainier	1,326	21
Hawksdale	1,344	22
Oakville	1,354	23
Havenport	1,360	24
Blue Ridge	1,363	25
Jacob	1,380	26
Paragon	1,380	27
Embrook	1,440	28
Brantwell	1,450	29
Sycamore	1,489	30
Jackson	1,494	31
Abilene	1,503	32
Sydney	1,537	33
Citation	1,540	34
Donovan	1,549	35
Richmond	1,566	36
Brooklyn	1,576	37
Ryan	1,584	38
Chestnut	1,587	39
Harlowe	1,600	40
Midland	1,604	41
Heston	1,623	42
Orion	1,653	43
Douglas	1,675	44
Bronson	1,684	45
Norquay	1,720	46
Cheyenne	1,723	47
Valemount	1,746	48
Aurora	1,767	49
McKenzie	1,778	50
Kensington	1,798	51
Wingate	1,814	52
Meadowbrook	1,870	53
Calder	1,900	54
Oslo	1,947	55
Dryden	2,029	56
Fairfield	2,076	57
Ardmore	2,123	58
Brookside	2,200	59
Olympia	2,299	60
Manitou	2,369	61
Cyprus	2,451	62
Raymond	2,464	63
Blackburn	2,500	64





# ACACIA

**952 SQ. FT.**  
**34'-0"W x 28'-0"D**

Living Room	15'-0" x 10'-0"
Kitchen	10'-0" x 10'-11"
Dining	12'-0" x 8'-0"
Master Bedroom	10'-6" x 11'-6"
Bedroom #2	10'-6" x 9'-6"

*\*All dimensions are approximate\**



**\*\* Available as RTM and Self-Contained \*\***

NOTE: Artist's renderings do not reflect actual home specifications.







# WESTON



**1054 SQ. FT.**  
**40'-0"W x 26'-0"D**

Living Room	17'-0" x 11'-10"
Kitchen/Dining	16'-2" x 12'-8"
Master Bedroom	12'-9" x 9'-0"
Bedroom #2	8'-6" x 10'-10"
Bedroom #3	9'-0" x 11'-10"

*"All dimensions are approximate"*

**\*\* Available as RTM \*\***

NOTE: Artist's renderings do not reflect actual home specifications.







# MCKINLEY

**1064 SQ. FT.**  
**28'-0"W x 38'-0"D**

Living Room	13'-6" x 17'-10"
Kitchen	13'-6" x 7'-6"
Dining	13'-6" x 8'-8"
Master Bedroom	11'-0" x 10'-6"
Bedroom #2	10'-0" x 10'-0"

*"All dimensions are approximate"*



**\*\* Available as RTM and Self-Contained \*\***

*NOTE: Artist's renderings do not reflect actual home specifications.*





**APRIL**

**1080 SQ. FT.**  
**42'-0"W x 27'-0"D**

Living Room	15'-6" x 15'-10"	Master Bedroom	13'-6" x 11'-0"
Kitchen	9'-4" x 10'-2"	Bedroom #2	13'-0" x 9'-2"
Dining	8'-6" x 10'-2"		

*"All dimensions are approximate"*



**\*\* Available as RTM \*\***

*NOTE: Artist's renderings do not reflect actual home specifications.*







# TARAN

**1120 SQ. FT.**  
**28'-0"W x 40'-0"D**

Living Room	16'-0" x 12'-0"
Kitchen	9'-0" x 11'-6"
Dining	10'-8" x 12'-0"
Master Bedroom	12'-1" x 9'-2"
Bedroom #2	8'-5" x 10'-8"
Bedroom #3	8'-5" x 10'-8"

*"All dimensions are approximate"*



**\*\* Available as RTM and Self-Contained \*\***

NOTE: Artist's renderings do not reflect actual home specifications.





# DENVER



**1124 SQ. FT.**  
**40'-0"W x 54'-0"D**

Living Room	13'-0" x 13'-6"
Kitchen	11'-0" x 13'-6"
Dining	10'-6" x 13'-6"
Master Bedroom	13'-8" x 11'-4"
Bedroom #2	10'-0" x 9'-6"
Garage	22'-0" x 24'-0"

*"All dimensions are approximate"*

NOTE: Artist's renderings do not reflect actual home specifications.





# ROWAN

**1176 SQ. FT.**  
**42'-0"W x 28'-0"D**

Living Room	16'-2" x 11'-4"	Master Bedroom	12'-5" x 12'-8"
Kitchen	14'-6" x 10'-0"	Bedroom #2	9'-10" x 9'-0"
Dining	10'-0" x 10'-0"	Bedroom #3	9'-10" x 9'-0"

*"All dimensions are approximate"*



**\*\* Available as RTM and Self-Contained \*\***

*NOTE: Artist's renderings do not reflect actual home specifications.*





# KNOXX



**1236 SQ. FT.**  
**48'-0"W x 44'-0"D**

Living Room	14'-8" x 15'-6"
Kitchen	11'-0" x 13'-6"
Dining	10'-0" x 10'-2"
Master Bedroom	12'-8" x 11'-6"
Garage	22'-0" x 24'-0"

*"All dimensions are approximate"*

NOTE: Artist's renderings do not reflect actual home specifications.



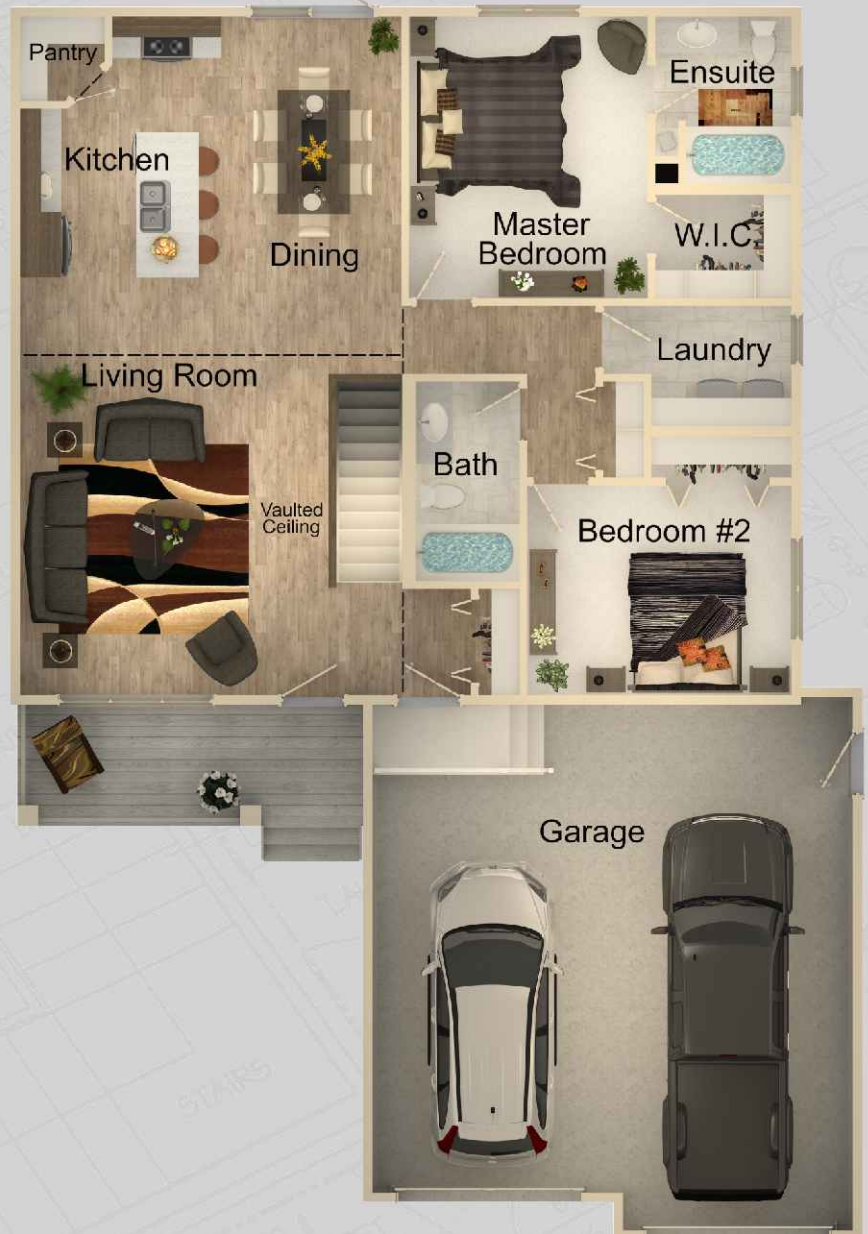


# ALIDA

**1273 SQ. FT.**  
**41'-0"W x 59'-6"D**

Living Room	14'-10" x 15'-4"
Kitchen	9'-4" x 13'-10"
Dining	9'-0" x 13'-10"
Master Bedroom	11'-6" x 13'-6"
Bedroom #2	12'-8" x 10'-0"
Garage	24'-0" x 24'-0" / 26'-0"

*\*All dimensions are approximate\**







# DALEY



**1274 SQ. FT.**  
**28'-0"W x 52'-0"D**

Living Room	13'-10" x 14'-0"
Kitchen	13'-0" x 16'-5"
Dining	10'-0" x 11'-0"
Master Bedroom	12'-11" x 10'-9"
Bedroom #2	12'-11" x 10'-7"

*"All dimensions are approximate"*

**\*\* Available as RTM \*\***

NOTE: Artist's renderings do not reflect actual home specifications.







# ROCKLYN

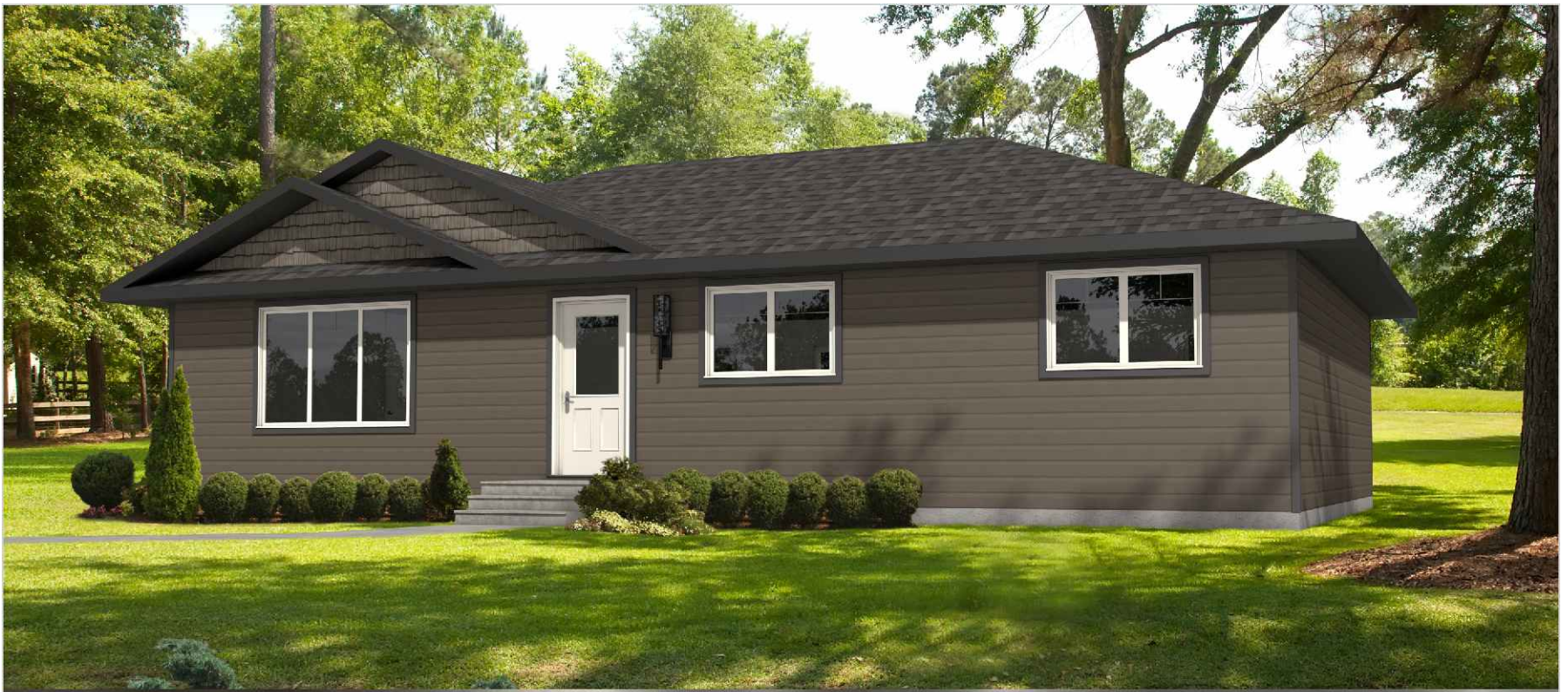
**1274 SQ. FT.**  
**40'-0"W x 64'-0"D**

Living Room	11'-10" x 13'-2"
Kitchen	10'-6" x 13'-8"
Dining	12'-0" x 11'-0"
Master Bedroom	12'-6" x 12'-8"
Office	10'-0" x 8'-6"
Garage	23'-0" x 26'-0"

*"All dimensions are approximate"*







# CASTLEGUARD

**1288 SQ. FT.**  
**46'-0"W x 28'-0"D**

Living Room	16'-0" x 13'-8"	Master Bedroom	11'-0" x 13'-0"
Kitchen	9'-0" x 13'-4"	Bedroom #2	10'-0" x 10'-0"
Dining	9'-0" x 13'-4"	Bedroom #3	10'-0" x 10'-0"

*"All dimensions are approximate"*



**\*\* Available as RTM and Self-Contained \*\***  
 NOTE: Artist's renderings do not reflect actual home specifications.







# EASTWOOD

**1293 SQ. FT.**  
**46'-0"W x 28'-0"D**

Living Room	16'-11" x 13'-3"/14'-11"	Master Bedroom	10'-11" x 13'-3"
Kitchen	8'-2" x 13'-3"	Bedroom #2	10'-1" x 8'-7"
Dining	10'-6" x 13'-3"	Bedroom #3	9'-11" x 8'-7"

*"All dimensions are approximate"*



**\*\* Available as RTM \*\***

*NOTE: Artist's renderings do not reflect actual home specifications.*







# RAINIER



**1326 SQ. FT.**  
**42'-0"W x 60'-0"D**

Living Room	16'-6" x 14'-0"
Kitchen	16'-6" x 9'-6"
Dining	12'-0" x 9'-6"
Master Bedroom	12'-0" x 12'-0"
Bedroom #2	12'-0" x 9'-6"
Garage	22'-0" x 24'-0"

*"All dimensions are approximate"*

NOTE: Artist's renderings do not reflect actual home specifications.





# HAWKSDALE

**1344 SQ. FT.**  
**48'-0"W x 28'-0"D**

Living Room	19'-0" x 13'-4"	Master Bedroom	10'-11" x 13'-4"
Kitchen	9'-0" x 13'-4"	Bedroom #2	9'-11" x 8'-8"
Dining	10'-0" x 13'-4"	Bedroom #3	10'-6" x 8'-8"

*"All dimensions are approximate"*



**\*\* Available as RTM and Self-Contained \*\***

*NOTE: Artist's renderings do not reflect actual home specifications.*





# OAKVILLE



**1354 SQ. FT.**  
**28'-0"W x 50'-0"D**

Living Room	12'-8" x 16'-6"
Kitchen	11'-0" x 11'-0"
Dining	14'-0" x 9'-0"
Master Bedroom	11'-4" x 13'-8"
Bedroom #2	9'-6" x 10'-0"
Bedroom #3	9'-6" x 9'-0"

*"All dimensions are approximate"*

**\*\* Available as RTM and Self-Contained \*\***

NOTE: Artist's renderings do not reflect actual home specifications.





# HAVENPORT

**1360 SQ. FT.**  
**40'-0"W x 62'-6"D**

Living Room	13'-0" x 13'-6"
Kitchen	11'-6" x 14'-4"
Dining	13'-6" x 9'-0"
Master Bedroom	13'-8" x 11'-6"
Bedroom #2	10'-0" x 10'-8"
Garage	24'-0" x 26'-0"

*\*All dimensions are approximate\**







## BLUE RIDGE

**1363 SQ. FT.**  
**50'-0"W x 28'-0"D**

Living Room	16'-8" x 15'-2"	Master Bedroom	12'-1" x 11'-2"
Kitchen	9'-6" x 11'-6"	Bedroom #2	11'-2" x 11'-6"
Dining	9'-6" x 11'-6"	Bedroom #3	9'-10" x 11'-6"

*"All dimensions are approximate"*



**\*\* Available as RTM and Self-Contained \*\***

NOTE: Artist's renderings do not reflect actual home specifications.





# JACOB

**1380 SQ. FT.**  
**50'-0"W x 29'-0"D**

Living Room	18'-4" x 12'-0"	Master Bedroom	11'-9" x 12'-7"
Kitchen	9'-1" x 12'-11"	Bedroom #2	10'-5" x 11'-3"
Dining	8'-10" x 9'-3"	Bedroom #3	10'-1" x 8'-11"

*"All dimensions are approximate"*



**\*\* Available as RTM \*\***

*NOTE: Artist's renderings do not reflect actual home specifications.*





# PARAGON



**1380 SQ. FT.**  
**44'-0"W x 54'-0"D**

Living Room	11'-6" x 18'-6"
Kitchen	9'-6" x 14'-0"
Dining	10'-0" x 14'-0"
Master Bedroom	14'-2" x 11'-0"
Bedroom #2	10'-6" x 10'-0"
Garage	24'-0" x 24'-0"

*"All dimensions are approximate"*

NOTE: Artist's renderings do not reflect actual home specifications.





# EMBROOK

**1440 SQ. FT.**  
**48'-0"W x 30'-0"D**

Living Room	15'-4" x 10'-3"	Master Bedroom	11'-4" x 14'-11"
Kitchen	9'-4" x 14'-11"	Bedroom #2	10'-0" x 10'-0"
Dining	8'-4" x 14'-11"	Bedroom #3	10'-0" x 10'-0"

*\*All dimensions are approximate\**



**\*\* Available as RTM \*\***

*NOTE: Artist's renderings do not reflect actual home specifications.*





# BRANTWELL



**1450 SQ. FT.**  
**44'-0"W x 64'-0"D**

Living Room	13'-0" x 16'-0"
Kitchen	9'-6" x 15'-0"
Dining	10'-0" x 15'-0"
Master Bedroom	12'-6" x 12'-0"
Bedroom #2	10'-2" x 10'-0"
Bedroom #3	10'-2" x 10'-0"
Garage	24'-0" x 24'-0" / 26'-0"

*"All dimensions are approximate"*

NOTE: Artist's renderings do not reflect actual home specifications.





# SYCAMORE

**1489 SQ. FT.**  
**52'-0"W x 30'-0"D**

Living Room	15'-2" x 15'-4"	Master Bedroom	12'-4" x 13'-0"
Kitchen	12'-2" x 13'-0"	Bedroom #2	10'-0" x 9'-6"
Dining	9'-6" x 13'-0"	Bedroom #3	10'-6" x 9'-6"

*"All dimensions are approximate"*



**\*\* Available as RTM and Self-Contained \*\***

*NOTE: Artist's renderings do not reflect actual home specifications.*





# JACKSON

**1494 SQ. FT.**  
**50'-0"W x 34'-0"D**

Living Room	14'-10" x 14'-0"	Master Bedroom	15'-6" x 13'-4"
Kitchen	12'-6" x 11'-0"	Bedroom #2	10'-8" x 10'-0"
Dining	12'-8" x 10'-0"	Bedroom #3	12'-0" x 10'-0"

*"All dimensions are approximate"*



**\*\* Available as RTM \*\***

NOTE: Artist's renderings do not reflect actual home specifications.





# ABILENE

**1503 SQ. FT.**  
**50'-0"W x 32'-6"D**

Living Room	14'-0" x 15'-0" / 16'-0"	Master Bedroom	12'-0" x 12'-0"
Kitchen	13'-0" x 13'-8"	Bedroom #2	9'-0" x 10'-0"
Dining	11'-6" x 11'-6"	Bedroom #3	9'-0" x 11'-4"

*\*All dimensions are approximate\**



**\*\* Available as RTM \*\***

NOTE: Artist's renderings do not reflect actual home specifications.





# SYDNEY



**1537 SQ. FT.**  
**42'-0"W x 64'-0"D**

Living Room	13'-0" x 24'-0"
Kitchen	10'-0" x 13'-2"
Dining	9'-6" x 8'-6"
Master Bedroom	15'-6" x 13'-2"
Bedroom #2	10'-2" x 10'-0"
Office	9'-6" x 10'-0"
Garage	24'-0" x 24'-0"

*"All dimensions are approximate"*

NOTE: Artist's renderings do not reflect actual home specifications.





# CITATION

**1540 SQ. FT.**  
**46'-0"W x 62'-0"D**

Living Room	13'-0" x 15'-0" / 16'-0"
Kitchen	10'-0" x 16'-0"
Dining	10'-0" x 10'-0"
Master Bedroom	15'-8" x 13'-6"
Bedroom #2	12'-0" x 10'-0"
Bedroom #3	12'-0" x 10'-6"
Garage	22'-0" x 24'-0"

*"All dimensions are approximate"*







# DONOVAN

**1549 SQ. FT.**  
**55'-0"W x 29'-6"D**

Living Room	14'-6" x 13'-10"	Master Bedroom	12'-6" x 13'-6"
Kitchen	14'-0" x 16'-8"	Bedroom #2	10'-2" x 11'-0"
Dining	9'-6" x 11'-8"	Bedroom #3	10'-2" x 10'-0"

*"All dimensions are approximate"*



**\*\* Available as RTM \*\***

NOTE: Artist's renderings do not reflect actual home specifications.





# RICHMOND

**1566 SQ. FT.**  
**85'-0"W x 59'-0"D**

Living Room	13'-0" x 14'-10"	Master Bedroom	14'-6" x 11'-6"
Kitchen	12'-6" x 9'-6"	Bedroom #2	11'-8" x 10'-6"
Dining	9'-6" x 11'-6"	Bedroom #3	11'-8" x 10'-6"
<i>"All dimensions are approximate"</i>		Garage	34'-0" x 24'-0"







# BROOKLYN



**1576 SQ. FT.**  
**40'-0"W x 65'-8"D**

Living Room	15'-0" x 12'-9" / 18'-0"
Kitchen	10'-11" x 13'-7"
Dining	9'-7" x 10'-0"
Master Bedroom	13'-5" x 13'-10"
Bedroom #2	10'-0" x 12'-0"
Office	10'-11" x 10'-11"
Garage	22'-0" x 24'-0"

*"All dimensions are approximate"*

NOTE: Artist's renderings do not reflect actual home specifications.





# RYAN

**1584 SQ. FT.**  
**30'-0"W x 58'-0"D**

Living Room	15'-0" x 20'-0"
Kitchen	11'-6" x 13'-6"
Dining	10'-0" x 12'-9"
Master Bedroom	17'-6" x 12'-9"
Bedroom #2	10'-0" x 12'-7"

*"All dimensions are approximate"*



**\*\* Available as RTM \*\***

NOTE: Artist's renderings do not reflect actual home specifications.







# CHESTNUT

**1587 SQ. FT.**  
**82'-0"W x 30'-0"D**

Living Room	15'-0" x 16'-0"	Master Bedroom	16'-8" x 12'-0"
Kitchen	13'-6" x 13'-0"	Bedroom #2	10'-0" x 9'-0"
Dining	11'-6" x 12'-0"	Bedroom #3	10'-0" x 9'-0"
		Garage	24'-0" x 24'-0"

*"All dimensions are approximate"*



**\*\* Available as RTM \*\***

NOTE: Artist's renderings do not reflect actual home specifications.





# HARLOWE

**1600 SQ. FT.**  
**56'-0"W x 30'-0"D**

Living Room	14'-8" x 15'-0"	Master Bedroom	14'-0" x 13'-0"
Kitchen	12'-0" x 10'-6"	Bedroom #2	11'-5" x 10'-0"
Dining	10'-9" x 10'-4"	Bedroom #3	11'-0" x 10'-0"

*"All dimensions are approximate"*



**\*\* Available as RTM and Self-Contained \*\***

*NOTE: Artist's renderings do not reflect actual home specifications.*





## MIDLAND

**1604 SQ. FT.**  
**56'-0"W x 30'-0"D**

Living Room	15'-0" x 16'-0"	Master Bedroom	12'-6" x 12'-0"
Kitchen	15'-2" x 13'-0"	Bedroom #2	10'-2" x 10'-4"
Dining	10'-4" x 10'-2"	Bedroom #3	10'-2" x 11'-4"

*"All dimensions are approximate"*



**\*\* Available as RTM \*\***

NOTE: Artist's renderings do not reflect actual home specifications.







# HESTON

**1623 SQ. FT.**  
**56'-0"W x 33'-0"D**

Living Room	15'-0" x 16'-0"	Master Bedroom	12'-0" x 12'-8"
Kitchen	13'-0" x 16'-10"	Bedroom #2	10'-2" x 11'-4"
Dining	15'-0" x 13'-0"	Bedroom #3	10'-2" x 11'-2"

*"All dimensions are approximate"*



**\*\* Available as RTM \*\***

*NOTE: Artist's renderings do not reflect actual home specifications.*





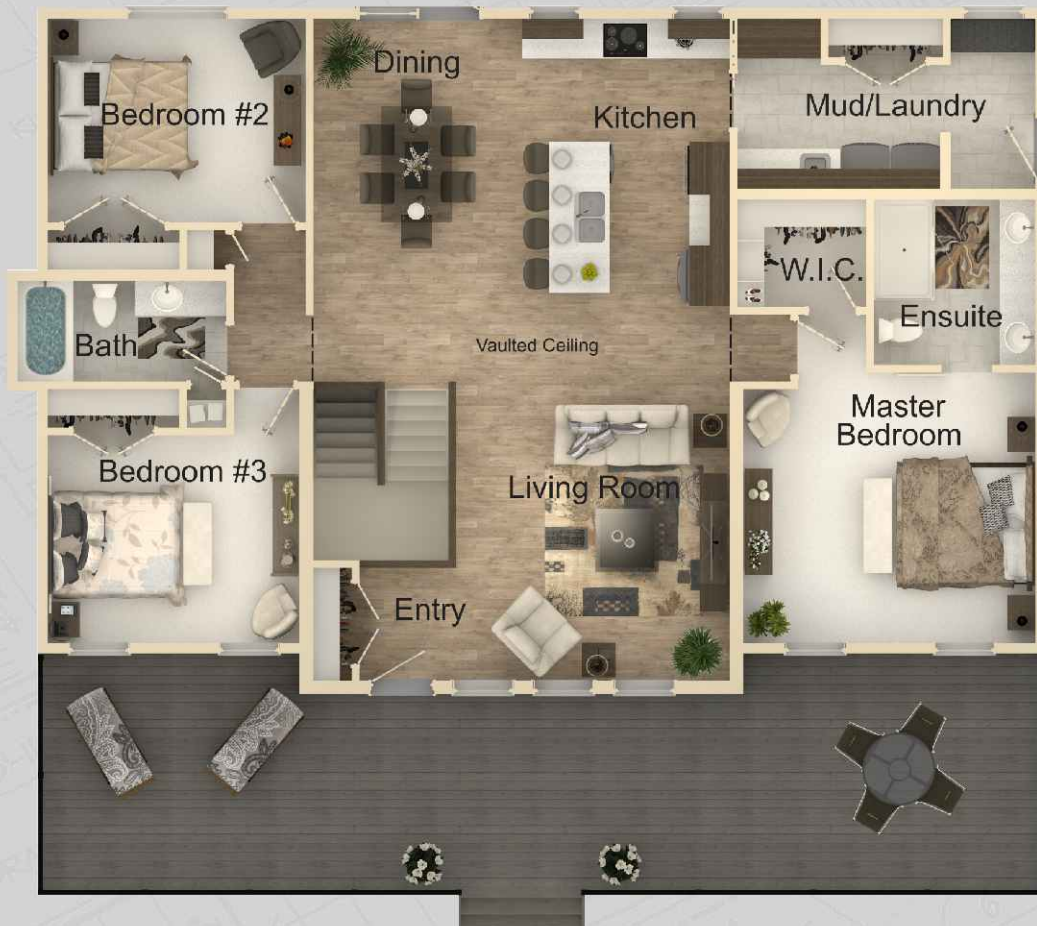


# ORION

**1653 SQ. FT.**  
**50'-0"W x 34'-0"D**

Living Room	13'-10" x 18'-4"	Master Bedroom	14'-6" x 13'-6"
Kitchen	10'-4" x 14'-8"	Bedroom #2	12'-10" x 10'-2"
Dining	10'-4" x 14'-8"	Bedroom #3	12'-6" x 10'-4"

*"All dimensions are approximate"*



**\*\* Available as RTM \*\***

NOTE: Artist's renderings do not reflect actual home specifications.





# DOUGLAS

**1675 SQ. FT.**  
**52'-0"W x 34'-0"D**

Living Room	14'-8" x 18'-0"	Master Bedroom	13'-1" x 14'-6"
Kitchen	11'-11" x 14'-7"	Bedroom #2	10'-8" x 11'-2"
Dining	12'-5" x 11'-0"	Bedroom #3	12'-0" x 10'-4"

*"All dimensions are approximate"*



**\*\* Available as RTM \*\***

*NOTE: Artist's renderings do not reflect actual home specifications.*







# BRONSON



**1684 SQ. FT.**  
**54'-0"W x 60'-0"D**

Living Room	14'-4" x 16'-0"
Kitchen	12'-4" x 10'-6"
Dining	12'-0" x 9'-2"
Master Bedroom	13'-8" x 13'-0"
Bedroom #2	12'-0" x 10'-8"
Bedroom #3	12'-0" x 10'-8"
Garage	34'-0" x 24'-0" / 26'-0"

*"All dimensions are approximate"*

NOTE: Artist's renderings do not reflect actual home specifications.







# NORQUAY

**1720 SQ. FT.**  
**56'-0"W x 32'-0"D**

Living Room	19'-0" x 13'-6"	Master Bedroom	12'-0" x 13'-6"
Kitchen	11'-0" x 13'-10"	Bedroom #2	10'-4" x 10'-0"
Dining	10'-0" x 13'-10"	Bedroom #3	10'-4" x 10'-0"

*"All dimensions are approximate"*



**\*\* Available as RTM and Self-Contained \*\***

NOTE: Artist's renderings do not reflect actual home specifications.





# CHEYENNE

**1723 SQ. FT.**  
**78'-10"W x 41'-0"D**

Living Room	17'-4" x 14'-5"	Master Bedroom	13'-2" x 14'-3"
Kitchen	9'-4" x 14'-3"	Bedroom #2	11'-8" x 11'-11"
Dining	11'-6" x 13'-9"	Bedroom #3	12'-6" x 10'-7" / 12'-3"
*All dimensions are approximate*		Garage	25'-4" x 26'-0"



NOTE: Artist's renderings do not reflect actual home specifications.

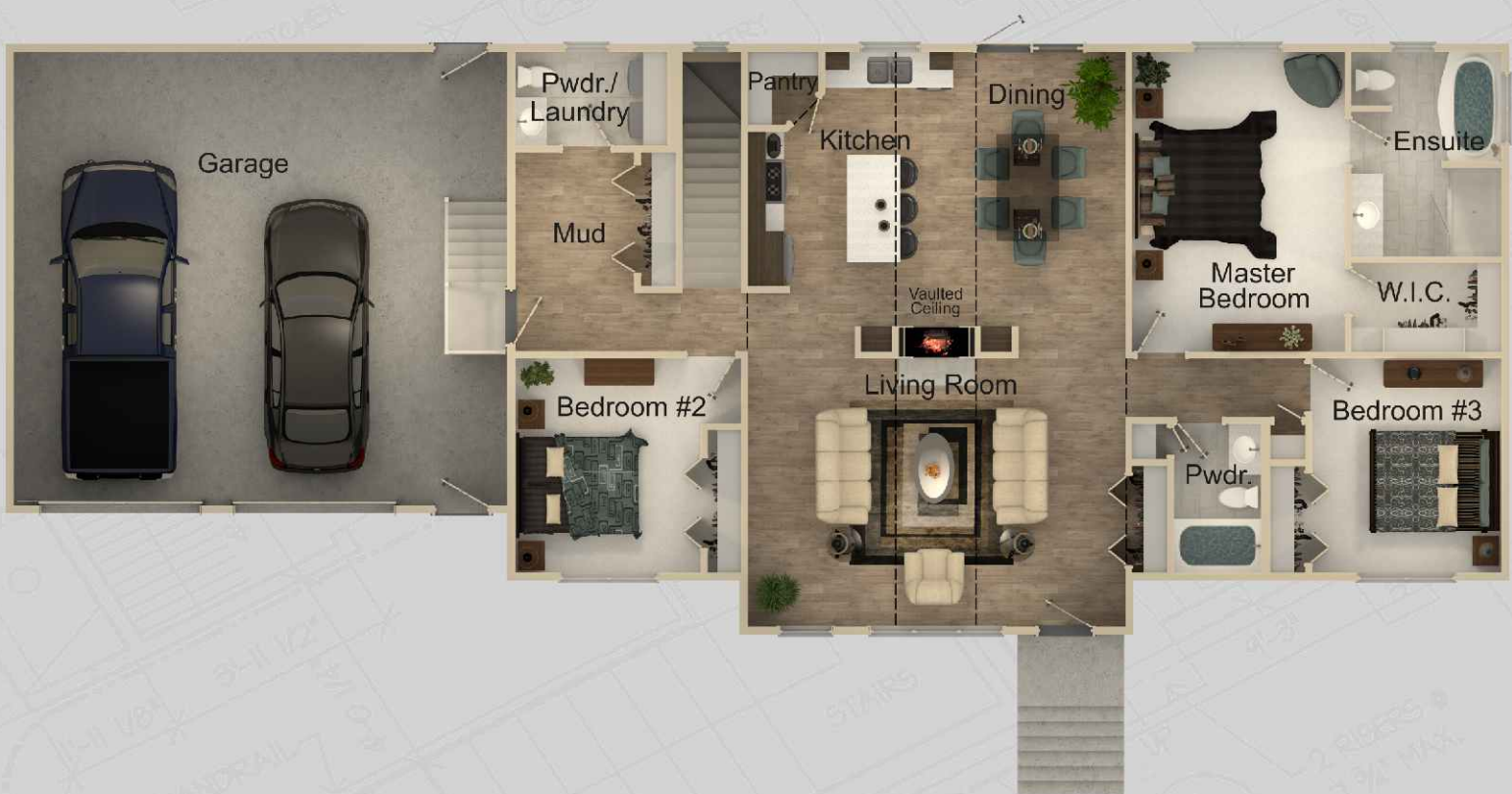




# VALEMOUNT

**1746 SQ. FT.**  
**84'-0"W x 33'-0"D**

Living Room	21'-0" x 15'-0"	Master Bedroom	12'-0" x 16'-8"
Kitchen	10'-6" x 15'-2"	Bedroom #2	10'-4" x 12'-0"
Dining	10'-6" x 15'-2"	Bedroom #3	10'-6" x 12'-0"
<i>"All dimensions are approximate"</i>		Garage	28'-0" x 26'-0"



**\*\* Available as RTM \*\***

NOTE: Artist's renderings do not reflect actual home specifications.







# AURORA

**1767 SQ. FT.**  
**82'-0"W x 34'-0"D**

Living Room	13'-5" x 16'-7"	Master Bedroom	11'-11" x 14'-10"
Kitchen	13'-7" x 12'-3"	Bedroom #2	11'-9" x 10'-1"
Dining	11'-0" x 12'-6"	Bedroom #3	11'-9" x 9'-11"
		Garage	26'-0" x 24'-0" / 26'-0"

*"All dimensions are approximate"*



**\*\* Available as RTM \*\***

NOTE: Artist's renderings do not reflect actual home specifications.







# MCKENZIE

**1778 SQ. FT.**  
**82'-0"W x 34'-0"D**

Living Room	16'-0" x 15'-2"	Master Bedroom	13'-10" x 15'-2"
Kitchen	13'-6" x 17'-10"	Bedroom #2	11'-11" x 11'-7"
Dining	12'-10" x 12'-9"	Bedroom #3	9'-1" x 11'-7"
		Garage	26'-0" x 29'-0"

*"All dimensions are approximate"*



**\*\* Available as RTM \*\***

NOTE: Artist's renderings do not reflect actual home specifications.







# KENSINGTON



**1798 SQ. FT.**  
**55'-6"W x 62'-0"D**

Living Room	17'-0" x 17'-0"
Kitchen	13'-8" x 11'-2"
Dining	13'-6" x 13'-0"
Master Bedroom	13'-8" x 13'-6"
Bedroom #2	10'-0" x 11'-0"
Bedroom #3	11'-0" x 10'-0"
Garage	24'-0" x 24'-0" / 26'-0"

*"All dimensions are approximate"*

NOTE: Artist's renderings do not reflect actual home specifications.





# WINGATE

**1814 SQ. FT.**  
**84'-0"W x 34'-0"D**

Living Room	13'-11" x 17'-0"	Bedroom #2	9'-11" x 10'-0"
Kitchen	14'-6" x 13'-2"	Bedroom #3	10'-7" x 9'-8"
Dining	10'-0" x 12'-2"	Bedroom #4	10'-7" x 9'-0"
Master Bedroom	15'-0" x 11'-10"	Garage	27'-0" x 30'-0"/32'-0"

*"All dimensions are approximate"*



**\*\* Available as RTM \*\***

NOTE: Artist's renderings do not reflect actual home specifications.





# MEADOWBROOK

**1870 SQ. FT.**  
**62'-0"W x 30'-0"D**

Living Room	19'-0" x 15'-0"	Master Bedroom	15'-0" x 12'-1"
Kitchen	13'-6" x 14'-0"	Bedroom #2	10'-10" x 10'-10"
Dining	16'-6" x 13'-8"	Bedroom #3	11'-0" x 10'-10"

*"All dimensions are approximate"*



**\*\* Available as RTM \*\***

NOTE: Artist's renderings do not reflect actual home specifications.





# CALDER

**1900 SQ. FT.**  
**90'-0" W x 34'-0" D**

Living Room	16'-10" x 15'-0"	Master Bedroom	13'-6" x 14'-4"
Kitchen	13'-0" x 15'-0"	Bedroom #2	10'-8" x 10'-4"
Dining	13'-6" x 12'-0"	Bedroom #3	12'-0" x 11'-0"
		Garage	28'-0" x 26'-0" / 28'-0"

*"All dimensions are approximate"*



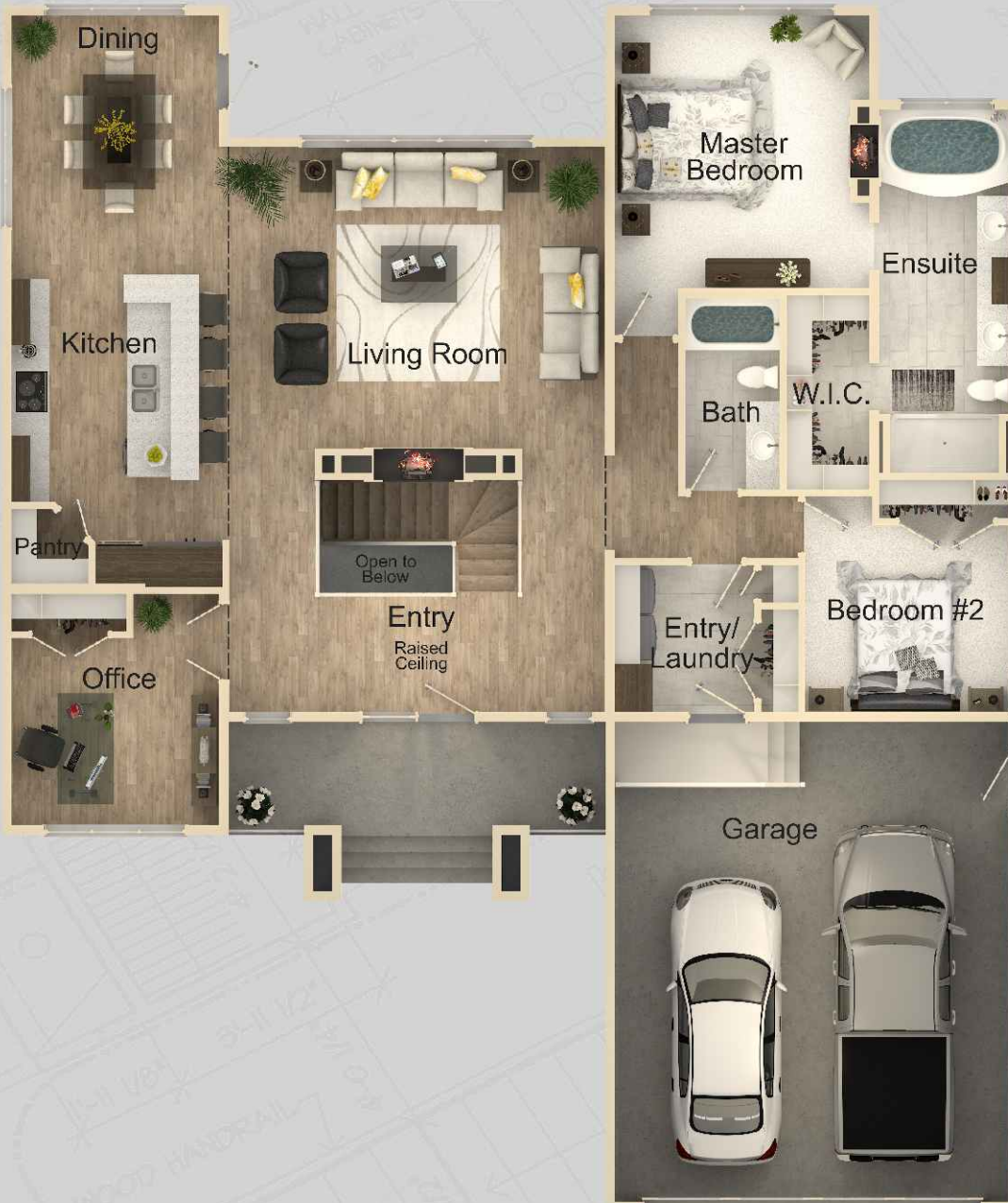
**\*\* Available as RTM \*\***

NOTE: Artist's renderings do not reflect actual home specifications.





# OSLO



**1947 SQ. FT.**  
**54'-0"W x 64'-0"D**

Living Room	20'-0" x 16'-0"
Kitchen	11'-6" x 17'-2"
Dining	11'-10" x 13'-0"
Master Bedroom	13'-6" x 14'-6"
Bedroom #2	11'-0" x 10'-0"
Office	11'-0" x 10'-0"
Garage	22'-0" x 26'-0"

*"All dimensions are approximate"*

NOTE: Artist's renderings do not reflect actual home specifications.





# DRYDEN

**2029 SQ. FT.**  
**70'-0"W x 58'-0"D**

Living Room	18'-2" x 20'-9"	Master Bedroom	12'-9" x 17'-7"
Kitchen	13'-5" x 12'-3"	Bedroom #2	12'-11" x 11'-0"
Dining	10'-11" x 13'-9"	Bedroom #3	12'-11" x 11'-7"
Nook	12'-0" x 8'-5"	Garage	26'-0" x 26'-6"

*"All dimensions are approximate"*







# FAIRFIELD

**2076 SQ. FT.**  
**95'-2 5/16"W x 36'-0"D**

Living Room	20'-0" x 15'-0"	Bedroom #2	11'-0" x 11'-5"
Kitchen	13'-3" x 14'-0"	Bedroom #3	10'-11" x 10'-6"
Dining	12'-4" x 11'-6"	Office	12'-0" x 11'-0"
Master Bedroom	13'-5" x 15'-2"	Garage	24'-0" x 36'-0"

*"All dimensions are approximate"*



NOTE: Artist's renderings do not reflect actual home specifications.





# ARDMORE

**2123 SQ. FT.**  
**67'-0" W x 67'-0" D**

Living Room	16'-0" x 19'-0"
Kitchen	11'-8" x 19'-0"
Dining	11'-6" x 9'-8"
Master Bedroom	13'-0" x 13'-6"
Bedroom #2	11'-6" x 10'-8"
Bedroom #3	11'-6" x 10'-8"
Garage	24'-0" / 26'-0" x 26'-0" / 28'-0"

*"All dimensions are approximate"*







# BROOKSIDE



**2200 SQ. FT.**  
**60'-0"W x 64'-0"D**

Living Room	16'-0" x 20'-0"
Kitchen	16'-4" x 15'-0"
Dining	13'-10" x 10'-6"
Master Bedroom	15'-6" x 14'-0"
Bedroom #2	13'-0" x 11'-6"
Bedroom #3	13'-0" x 11'-6"
Garage	31'-0" x 24'-0" / 26'-0"

*"All dimensions are approximate"*

NOTE: Artist's renderings do not reflect actual home specifications.





# OLYMPIA

**2299 SQ. FT.**  
**108'-0"W x 36'-0"D**

Living Room	18'-0" x 15'-0"	Master Bedroom	13'-6" x 13'-0"
Kitchen	18'-0" x 15'-8"	Bedroom #2	11'-2" x 11'-2"
Dining	13'-0" x 11'-10"	Bedroom #3	11'-2" x 12'-0"
<i>"All dimensions are approximate"</i>		Garage	40'-0" x 26'-0"/28'-0"



**\*\* Available as RTM \*\***

NOTE: Artist's renderings do not reflect actual home specifications.





# MANITOU

**2369 SQ. FT.**  
**72'-0"W x 34'-0"D**

Living Room	19'-0" x 16'-6"	Master Bedroom	14'-6" x 12'-6"
Family Room	19'-0" x 13'-6"	Bedroom #2	11'-6" x 10'-6"
Kitchen	14'-0" x 15'-6"	Bedroom #3	11'-0" x 10'-0"
Dining	12'-0" x 14'-6"		

*"All dimensions are approximate"*



**\*\* Available as RTM \*\***

NOTE: Artist's renderings do not reflect actual home specifications.





# CYPRUS

**2451 SQ. FT.**  
**106'-6"W x 52'-0"D**

Living Room	13'-7" x 18'-6"	Master Bedroom	13'-0" x 14'-10"
Family Room	13'-11" x 16'-0"	Bedroom # 2	12'-2" x 10'-9"
Kitchen	10'-10" x 12'-7"	Bedroom # 3	12'-0" x 11'-7"
Dining	10'-1" x 15'-11"	Den	Irregular
Nook	9'-6" x 12'-10"	Garage	34'-0" x 22'-0" / 24'-0"

*"All dimensions are approximate"*







# RAYMOND

**2464 SQ. FT.**  
**80'-0"W x 52'-0"D**

Living Room	19'-6" x 16'-0"	Master Bedroom	15'-0" x 14'-6"
Kitchen	12'-0" x 18'-6"	Bedroom #2	13'-0" x 11'-6"
Dining	11'-0" x 13'-4"	Bedroom #3	11'-2" x 13'-0"
Nook	11'-6" x 16'-0"	Garage	33'-0" x 24'-0" / 28'-0"

*"All dimensions are approximate"*



NOTE: Artist's renderings do not reflect actual home specifications.





# BLACKBURN

**2500 SQ. FT.**  
**76'-0"W x 36'-0"D**

Living Room	18'-0" x 14'-6"	Master Bedroom	13'-0" x 16'-0"
Kitchen	10'-6" x 20'-6"	Bedroom #2	11'-0" x 10'-6"
Dining	10'-0" x 20'-6"	Bedroom #3	11'-0" x 10'-6"
		Garage	48'-0"/50'-0" x 28'-0"/30'-0"

*"All dimensions are approximate"*



**\*\* Available as RTM \*\***

NOTE: Artist's renderings do not reflect actual home specifications.





# BI-LEVELS



Name	Sq. Ft.	Page No.
Allen	1004	66
Camile	1147	67
Garrick	1200	68
Hailey	1268	69
Keystone	1350	70
Rutherford	1380	71
Aldwyn	1498	72

BI-LEVELS





# ALLEN

**1004 SQ. FT.**  
**26'-0"W x 44'-0"D**

Living Room	15'-0" x 13'-4"
Kitchen	10'-10" x 12'-0"
Dining	10'-10" x 8'-0"
Master Bedroom	11'-6" x 11'-6"
Bedroom #2	11'-6" x 9'-0"

*"All dimensions are approximate"*







# CAMILE



**1147 SQ. FT.**  
**30'-0"W x 44'-8"D**

Living Room	16'-5" x 13'-1"
Kitchen	12'-6" x 8'-5"
Dining	9'-6" x 10'-0"
Master Bedroom	13'-6" x 11'-11"
Bedroom #2	12'-5" x 8'-9"

*"All dimensions are approximate"*

NOTE: Artist's renderings do not reflect actual home specifications.





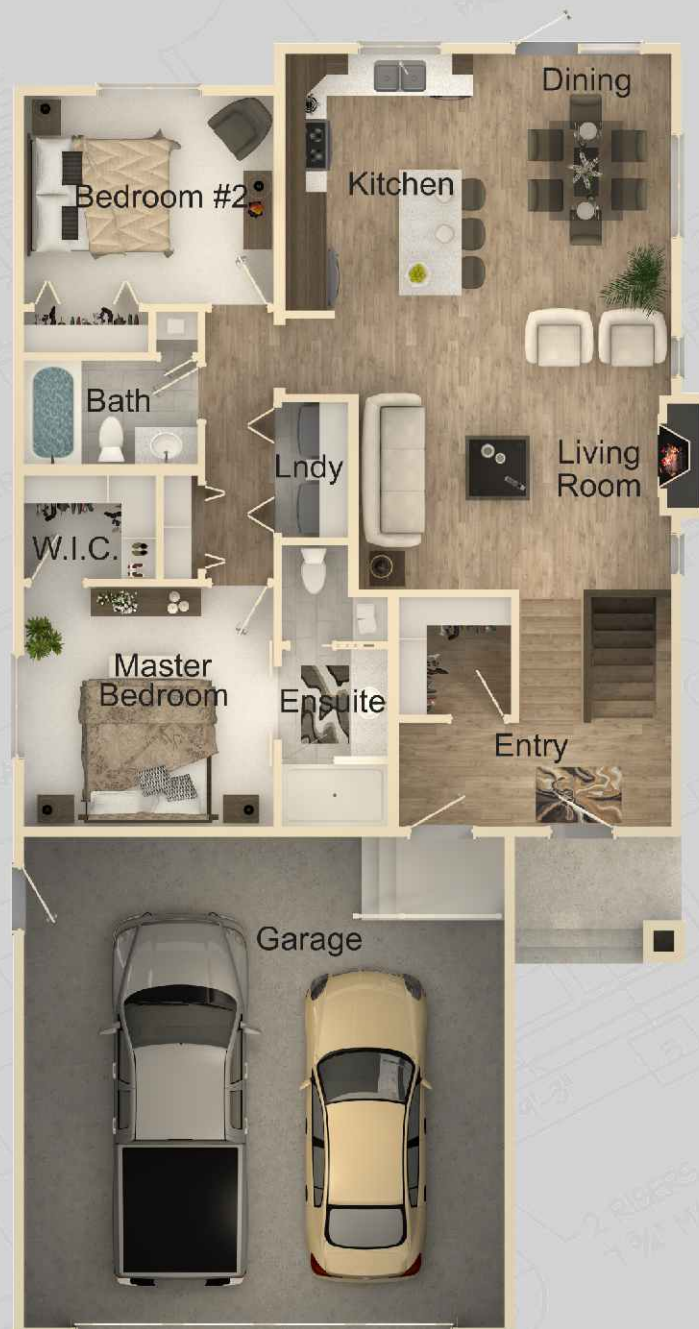


# GARRICK

**1200 SQ. FT.**  
**32'-0"W x 62'-0"D**

Living Room	15'-0" x 13'-0"
Kitchen	9'-6" x 12'-8"
Dining	9'-0" x 12'-8"
Master Bedroom	12'-0" x 11'-6"
Bedroom #2	12'-0" x 10'-0"
Garage	24'-0" x 24'-0"

*"All dimensions are approximate"*







# HAILEY

**1268 SQ. FT.**  
**39'-0"W x 52'-3"D**

Living Room	12'-0" x 14'-7"	Master Bedroom	13'-0" x 13'-3"
Kitchen	9'-0" x 12'-4"	Bedroom #2	10'-2" x 11'-0"
Dining	9'-0" x 12'-8"	Bedroom #3	10'-0" x 10'-0"
<i>"All dimensions are approximate"</i>		Garage	22'-0" x 24'-9"



NOTE: Artist's renderings do not reflect actual home specifications.



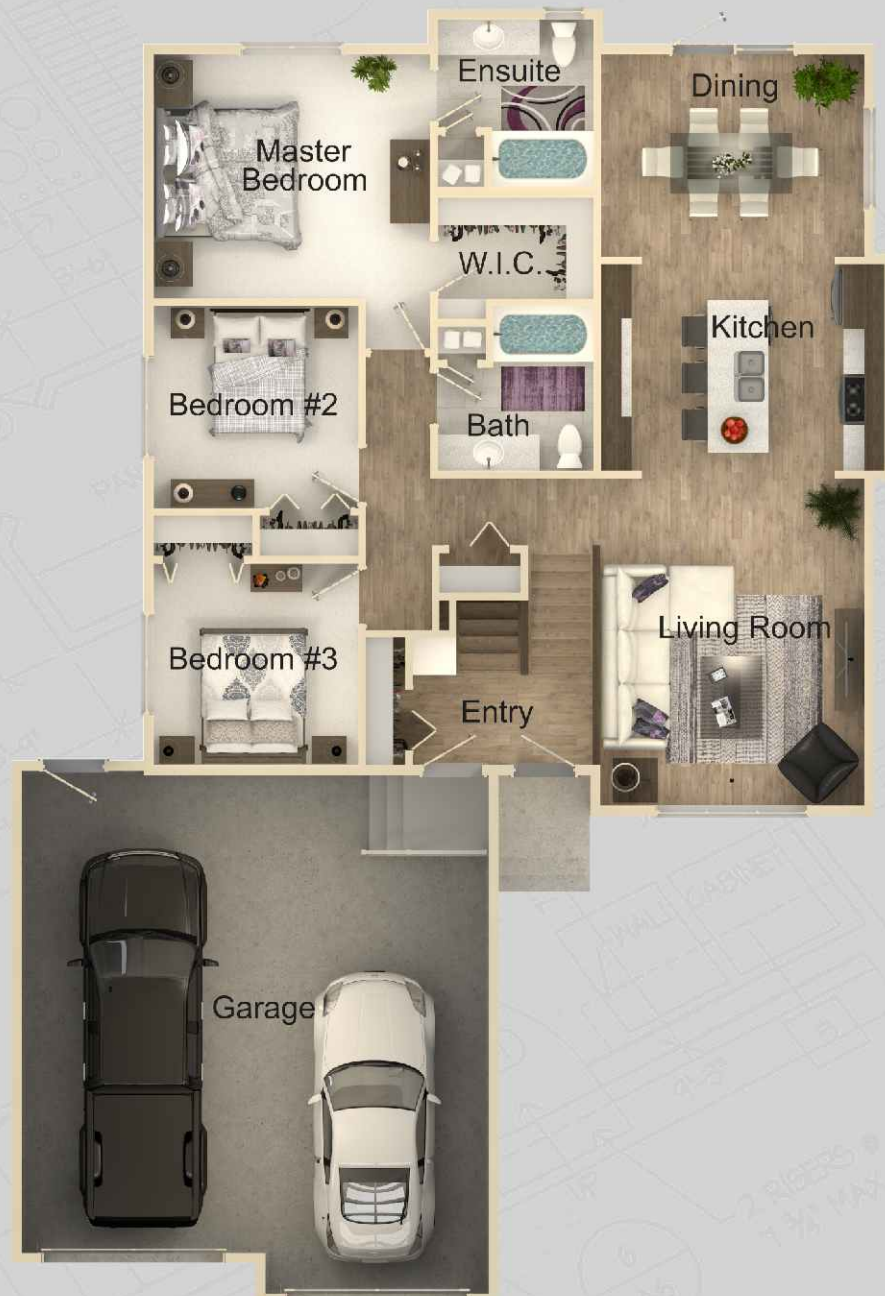


# KEYSTONE

**1350 SQ. FT.**  
**42'-6"W x 62'-0"D**

Living Room	13'-0" x 16'-2"
Kitchen	14'-0" x 10'-0"
Dining	13'-0" x 9'-10"
Master Bedroom	13'-8" x 12'-0"
Bedroom #2	10'-0" x 10'-0"
Bedroom #3	10'-0" x 10'-0"
Garage	24'-0" x 24'-0" / 26'-0"

*"All dimensions are approximate"*



NOTE: Artist's renderings do not reflect actual home specifications.





# RUTHERFORD



**1380 SQ. FT.**  
**46'-0"W x 53'-0"D**

<i>Living Room</i>	<i>14'-6" x 16'-0"</i>
<i>Kitchen</i>	<i>12'-8" x 13'-4"</i>
<i>Dining</i>	<i>10'-0" x 15'-0"</i>
<i>Master Bedroom</i>	<i>13'-0" x 13'-0"</i>
<i>Bedroom #2</i>	<i>10'-6" x 10'-6"</i>
<i>Garage</i>	<i>24'-0" x 24'-0" / 26'-0"</i>

*"All dimensions are approximate"*

NOTE: Artist's renderings do not reflect actual home specifications.







# ALDWYN

**1498 SQ. FT.**  
**72'-4"W x 37'-0"D**

Living Room	14'-0" x 15'-4"	Master Bedroom	11'-9" x 14'-5"
Kitchen	11'-0" x 14'-8"	Bedroom #2	10'-7" x 10'-1"
Dining	10'-6" x 13'-10"	Bedroom #3	11'-7" x 10'-1"
<i>*All dimensions are approximate*</i>		Garage	23'-4" x 29'-0"



NOTE: Artist's renderings do not reflect actual home specifications.



# TWO-STOREYS



Name	Sq. Ft.	Page No.
Courtney	1,176	74
Stratton	1,347	75
Denton	1,479	76
Fulton	1,539	77
Lethbridge	1,669	78
Wendel	1,744	79
Inglewood	1,804	80
Carmichael	1,835	81
Victory	2,021	82
Metropolitan	2,064	83
Nicholson	2,312	84
Fairmont	2,316	85
Winston	2,399	86
Sienna	2,401	87
Chestermere	2,422	88
Arizona	2,448	90
Trinity	2,452	91
Leighton	2,507	92
Ashbury	2,521	93
Branston	2,618	94
Santana	2,719	95
Royale	2,783	96
Tryston	2,868	97
Thompson	2,950	98
Morrison	3,480	99
Chancellor	4,749	100
Kimball	4,750	102

TWO-STOREYS





# COURTNEY

**1176 SQ. FT.**  
**20'-0"W x 32'-0"D**

- Living Room 12'-0" x 17'-0" / 18'-6"
- Kitchen/ Dining 12'-2" x 13'-0"
- Master Bedroom 12'-0" x 11'-0" / 12'-6"
- Bedroom #2 9'-2" x 11'-4"
- Bedroom #3 9'-6" x 9'-6"

*"All dimensions are approximate"*



**Main Floor**  
637 Sq.Ft.

**Second Floor**  
539 Sq.Ft.

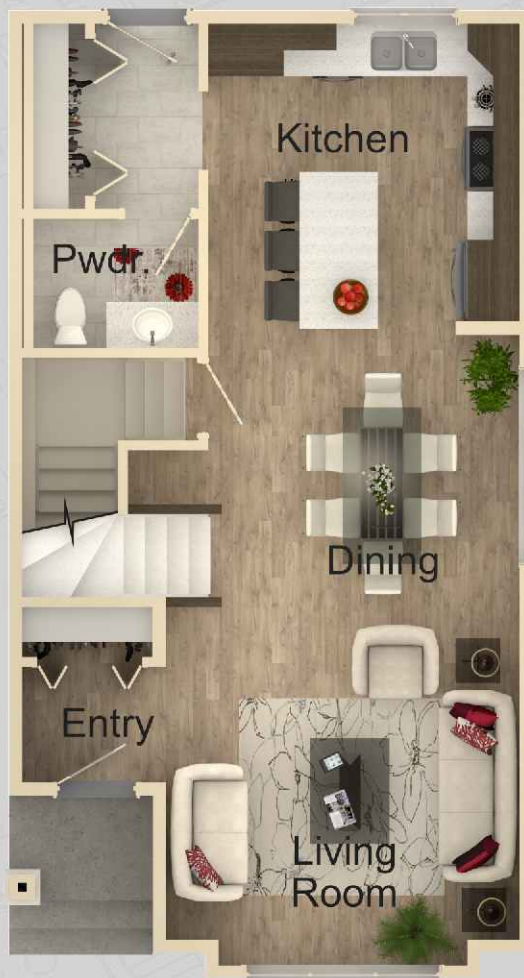
**\*\* Available as RTM \*\***

NOTE: Artist's renderings do not reflect actual home specifications.





# STRATTON



**Main Floor**  
698 Sq.Ft.



**Second Floor**  
649 Sq.Ft.

**1347 SQ. FT.**  
**20'-0"W x 36'-0"D**

Living Room	13'-6" x 13'-2"
Kitchen	12'-0" x 11'-10"
Dining	11'-6" x 10'-0"
Master Bedroom	13'-6" x 11'-0"
Bedroom #2	9'-2" x 10'-0"
Bedroom #3	9'-6" x 10'-0"

*"All dimensions are approximate"*

NOTE: Artist's renderings do not reflect actual home specifications.







# DENTON

**1479 SQ. FT.**  
**26'-0"W x 30'-0"D**

Living Room	13'-0" x 14'-8"	Master Bedroom	12'-6" x 13'-6"
Kitchen	9'-6" x 14'-2"	Bedroom #2	10'-0" x 10'-0"
Dining	9'-0" x 14'-2"	Bedroom #3	10'-0" x 9'-0"

*"All dimensions are approximate"*





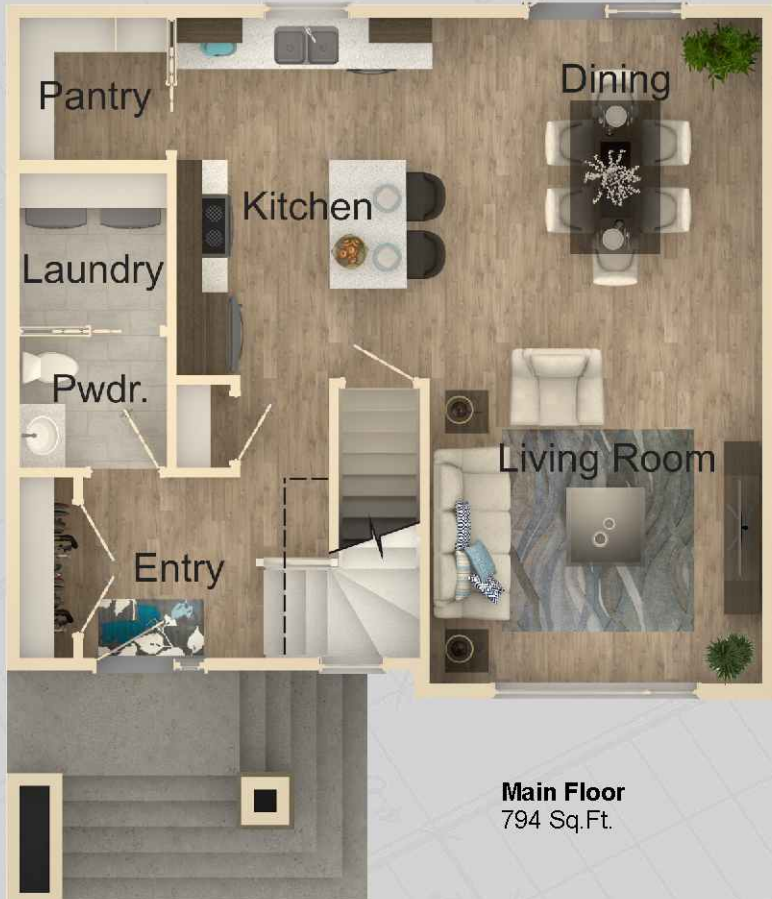


# FULTON

**1539 SQ. FT.**  
**30'-0"W x 27'-0"D**

Living Room	13'-0" x 15'-6"	Master Bedroom	13'-0" x 15'-2"
Kitchen	10'-6" x 14'-0"	Bedroom #2	10'-0" x 10'-0"
Dining	12'-6" x 10'-6"	Bedroom #3	10'-0" x 10'-0"

*"All dimensions are approximate"*



**Main Floor**  
794 Sq.Ft.



**Second Floor**  
745 Sq.Ft.

NOTE: Artist's renderings do not reflect actual home specifications.







# LETHBRIDGE

**1669 SQ. FT.**  
**32'-0"W x 55'-0"D**

Living Room	16'-0" x 14'-6"
Kitchen	8'-6" x 13'-8"
Dining	10'-6" x 10'-0"
Master Bedroom	12'-6" x 13'-10"
Bedroom #2	10'-0" x 9'-6"
Bedroom #3	10'-0" x 9'-6"
Garage	22'-0" x 24'-0"

*"All dimensions are approximate"*



**Second Floor**  
 727 Sq.Ft.



**Main Floor**  
 942 Sq.Ft.



NOTE: Artist's renderings do not reflect actual home specifications.





# WENDEL

**1744 SQ. FT.**  
**25'-6"W x 41'-0"D**

Living Room	13'-0" x 14'-0"	Master Bedroom	12'-0" x 14'-2"
Kitchen	12'-0" x 12'-6"	Bedroom #2	11'-4" x 11'-10"/14'-10"
Dining	10'-0" x 14'-0"	Bedroom #3	11'-4" x 11'-10"/14'-10"

*"All dimensions are approximate"*



NOTE: Artist's renderings do not reflect actual home specifications.





# INGLEWOOD

**1804 SQ. FT.**  
**24'-0"W x 42'-0"D**

Living Room	11'-11" x 16'-8"	Master Bedroom	12'-11" x 12'-3"
Kitchen	9'-5" x 12'-6"	Bedroom #2	10'-7" x 13'-2"
Dining	10'-0" x 8'-4"	Bedroom #3	11'-11" x 10'-9"
<i>"All dimensions are approximate"</i>		Office	12'-11" x 13'-11"



**Main Floor**  
945 Sq.Ft.



**Second Floor**  
859 Sq.Ft.

**\*\* Available as RTM \*\***

*NOTE: Artist's renderings do not reflect actual home specifications.*







# CARMICHAEL

**1835 SQ. FT.**  
**53'-0"W x 62'-0"D**

Living Room	14'-6" x 15'-6"	Bedroom #2	9'-6" x 10'-2"
Kitchen	10'-2" x 14'-2"	Bedroom #3	9'-6" x 10'-2"
Dining	9'-8" x 12'-6"	Bedroom #4	9'-8" x 10'-0"
Master Bedroom	14'-0" x 13'-6"	Garage	35'-0" x 22'-0" / 24'-0"

*"All dimensions are approximate"*



**Main Floor**  
1250 Sq. Ft.

**Second Floor**  
585 Sq. Ft.

NOTE: Artist's renderings do not reflect actual home specifications.





# VICTORY

**2021 SQ. FT.**  
**55'-0"W x 37'-0"D**

Great Room	17'-8" x 13'-2"	Master Bedroom	12'-4" x 14'-6"
Kitchen	11'-9" x 13'-0"	Bedroom #2	10'-1" x 9'-6"
Dining	11'-7" x 15'-2"	Bedroom #3	10'-1" x 9'-6"
Den	9'-8" x 11'-6"	Studio	16'-2" x 8'-6"
<i>*All dimensions are approximate*</i>		Garage	23'-6" x 23'-0"



**Main Floor**  
 1065 Sq.Ft.



**Second Floor**  
 956 Sq.Ft.





# METROPOLITAN

**2064 SQ. FT.**  
**24'-0"W x 46'-0"D**

Living Room	13'-0" x 15'-0"	Master Bedroom	13'-0"/17'-0" x 15'-0"
Kitchen	10'-0" x 15'-10"	Bedroom #2	11'-4" x 10'-6"
Dining	13'-0" x 10'-0"	Bedroom #3	11'-4" x 10'-6"
Den	13'-0" x 14'-0"/19'-6"		"All dimensions are approximate"



**Main Floor**  
1072 Sq.Ft.



**Second Floor**  
992 Sq.Ft.

**\*\* Available as RTM \*\***

NOTE: Artist's renderings do not reflect actual home specifications.





# NICHOLSON

**2312 SQ. FT.**  
**48'-0"W x 60'-0"D**

Living Room	14'-6" x 18'-6"	Bedroom #2	12'-0" x 11'-0"
Kitchen	14'-6" x 9'-6"	Bedroom #3	12'-0" x 11'-0"
Dining	14'-6" x 9'-0"	Bonus Room	18'-6" x 14'-6"/16'-6"
Master Bedroom	13'-6" x 13'-6"	Garage	35'-0" x 24'-0"/26'-0"

*\*All dimensions are approximate\**







# FAIRMONT

**2316 SQ. FT.**  
**82'-0"W x 33'-0"D**

Living Room	16'-0" x 17'-0"	Master Bedroom	14'-0" x 16'-0"
Kitchen	11'-0" x 12'-9"	Bedroom #2	13'-4" x 12'-2"
Dining	10'-6" x 11'-0"	Bedroom #3	11'-6" x 12'-2"
<i>"All dimensions are approximate"</i>		Den	11'-0" x 8'-4"



**Main Floor**  
1776 Sq.Ft.



**Second Floor**  
540 Sq.Ft.

**\*\* Available as RTM \*\***

NOTE: Artist's renderings do not reflect actual home specifications.





# WINSTON

**2399 SQ. FT.**  
**59'-0"W x 46'-0"D**

Living Room	15'-0" x 20'-0"	Bedroom #2	10'-7" x 13'-3"
Kitchen	9'-6" x 14'-7"	Bedroom #3	10'-11" x 11'-7"/12'-7"
Dining	11'-6" x 15'-0"	Den	12'-0" x 9'-6"
Master Bedroom	16'-2" x 16'-11"	Garage	33'-0" x 24'-0"/26'-0"

*"All dimensions are approximate"*







# SIENNA

**2401 SQ. FT.**  
**40'-0"W x 53'-0"D**

<i>Living Room</i>	<i>14'-0" / 11'-8" x 17'-0"</i>	<i>Master Bedroom</i>	<i>13'-8" x 12'-6"</i>
<i>Kitchen</i>	<i>10'-0" x 19'-0"</i>	<i>Bedroom #2</i>	<i>10'-0" x 12'-6"</i>
<i>Dining</i>	<i>14'-0" x 15'-0"</i>	<i>Bedroom #3</i>	<i>10'-0" x 12'-6"</i>
<i>Office</i>	<i>10'-0" x 12'-0"</i>	<i>Bonus Room</i>	<i>21'-0" x 15'-2"</i>
		<i>Garage</i>	<i>22'-0" x 24'-0"</i>

*"All dimensions are approximate"*



NOTE: Artist's renderings do not reflect actual home specifications.







## CHESTERMERE (Front)

**2422 SQ. FT.**  
**46'-0" W x 66'-0" D**  
**Main Floor**

Living Room	18'-0" x 14'-0"
Kitchen	13'-6" x 12'-10"
Dining	13'-0" x 9'-6"
Master Bedroom	13'-0" x 18'-6"
Garage	24'-0" x 30'-0" / 32'-0"

*"All dimensions are approximate"*



**Main Floor**  
 1484 Sq. Ft.





## CHESTERMERE (Rear)



### ***Second Floor***

*Bedroom #2*                    13'-0" x 11'-0"

*Bedroom #3*                    13'-0" x 11'-0"

*Guest Room*                    13'-0" x 8'-0"

*Optional Bonus Room* 13'-0" x 29'-6"

*Adds 490 Sq.Ft.*

*"All dimensions are approximate"*

**Second Floor**  
938 Sq.Ft.

NOTE: Artist's renderings do not reflect actual home specifications.





# ARIZONA

**2448 SQ. FT.**  
**48'-0"W x 56'-0"D**

Living Room	16'-4" x 18'-10"	Bedroom #2	11'-2" x 11'-5"
Kitchen	14'-10" x 12'-3"	Bedroom #3	13'-3" x 14'-7"
Dining	15'-2" x 10'-7"	Bedroom #4	9'-10" x 13'-11"
Office	11'-2" x 10'-4"	Garage	22'-0" x 22'-0"
Master Bedroom	12'-7" x 14'-6"		

*"All dimensions are approximate"*



NOTE: Artist's renderings do not reflect actual home specifications.





# TRINITY



**2452 SQ. FT.**  
**52'-0"W x 86'-0"D**



Great Room	17'-6" x 15'-10"
Kitchen	14'-8" x 13'-8"
Dining	12'-0" x 13'-4"
Nook	12'-0" x 8'-0"
Office	11'-0" x 14'-0"/15'-0"
Master Bedroom	17'-0" x 13'-0"
Bedroom #2	11'-0" x 10'-0"
Bedroom #3	11'-0" x 10'-0"
Bedroom #4	11'-8" x 9'-10"
Garage	24'-0"/26'-0" x 38'-0"/40'-0"

"All dimensions are approximate"

NOTE: Artist's renderings do not reflect actual home specifications.







# LEIGHTON

**2507 SQ. FT.**  
**76'-0"W x 38'-0"D**

Living Room	16'-0" x 14'-4"	Bedroom #2	11'-0" x 12'-0"
Kitchen	10'-0" x 14'-4"	Bedroom #3	13'-6" x 10'-0"
Dining	9'-0" x 14'-4"	Guest Room	13'-4" x 12'-10"
Master Bedroom	12'-4" x 12'-6"	Loft	13'-6" x 18'-4"
<i>"All dimensions are approximate"</i>		Garage	24'-0" x 24'-0"



NOTE: Artist's renderings do not reflect actual home specifications.





# ASHBURY

**2521 SQ. FT.**  
**42'-0"W x 31'-0"D**

Living Room	13'-6" / 12'-6" x 13'-9"	Master Bedroom	13'-2" x 15'-0"
Kitchen	13'-6" x 13'-9"	Bedroom #2	13'-2" x 12'-0"
Dining	14'-0" x 13'-9"	Bedroom #3	13'-2" x 12'-0"
<i>"All dimensions are approximate"</i>		Office	10'-10" / 13'-2" x 14'-9"



**Main Floor**  
1281 Sq.Ft.



**Second Floor**  
1240 Sq.Ft.

**\*\* Available as RTM \*\***

*NOTE: Artist's renderings do not reflect actual home specifications.*





# BRANSTON

**2618 SQ. FT.**  
**52'-0"W x 64'-0"D**

Living Room	16'-0" x 19'-0"	Bedroom #2	12'-0" x 10'-0"
Kitchen	15'-0" x 14'-6"	Bedroom #3	12'-0" x 10'-0"
Dining	13'-0" x 10'-6"	Bonus Room	15'-0" x 15'-0"
Master Bedroom	15'-8" x 16'-0"	Garage	24'-0" x 20'-0"/26'-0"

*"All dimensions are approximate"*







# SANTANA

**2719 SQ. FT.**  
**56'-0"W x 38'-0"D**

Living Room	16'-6" x 16'-10"	Master Bedroom	13'-0" x 14'-6"
Kitchen	10'-0" x 11'-0"	Bedroom #2	13'-0" x 11'-8"
Dining	19'-6" x 9'-0"	Bedroom #3	13'-0" x 11'-4"
Media Room	13'-0" x 10'-8"	Bonus Room	19'-6" x 15'-0"/20'-0"

*"All dimensions are approximate"*



**Main Floor**  
1702 Sq. Ft.

**Second Floor**  
1017 Sq. Ft.

NOTE: Artist's renderings do not reflect actual home specifications.





# ROYALE

**2783 SQ. FT.**  
**45'-6"W x 46'-0"D**

Living Room	17'-6" x 14'-2"	Bedroom #3	10'-0" x 11'-8"
Kitchen	13'-8" x 13'-0"	Bedroom #4	10'-0" x 14'-10"
Dining	12'-6" x 12'-0"	Bedroom #5	11'-4" x 14'-4"
Master Bedroom	14'-0" x 12'-0" / 13'-0"	Mechanical	11'-0" x 14'-8"
Bedroom #2	10'-0" x 10'-4"	Family Room	14'-2" x 17'-2"
		Garage	22'-0" x 26'-0"

*\*All dimensions are approximate\**



**Main Floor**  
1263 Sq. Ft.



**Second Floor**  
1520 Sq. Ft.



NOTE: Artist's renderings do not reflect actual home specifications.





# TRYSTON

**2868 SQ. FT.**  
**62'-0"W x 48'-0"D**

Living Room	20'-0" x 14'-8"	Bedroom #3	12'-11" x 10'-7"
Kitchen	13'-3" x 18'-6"	Bedroom #4	10'-7" x 11'-7"
Dining	13'-11" x 10'-4"	Den	12'-11" x 10'-10"
Master Bedroom	13'-11" x 15'-5"	Garage	25'-6" x 48'-0"
Bedroom #2	12'-1" x 12'-7"		

*"All dimensions are approximate"*



NOTE: Artist's renderings do not reflect actual home specifications.







# THOMPSON

**2950 SQ. FT.**  
**38'-0"W x 66'-0"D**

Great Room	19'-0" x 15'-6"	Bedroom #2	11'-8" x 11'-0"
Kitchen	15'-6" x 11'-3"	Bedroom #3	11'-8" x 11'-0"
Dining	14'-6" x 11'-6"	Bonus Room	15'-0" x 11'-6"
Master Bedroom	13'-6" x 15'-6"	Den / Office	13'-6" x 12'-6"
		Garage	30'-0" x 26'-0"

*"All dimensions are approximate"*



NOTE: Artist's renderings do not reflect actual home specifications.





# MORRISON

**3480 SQ. FT.**  
**72'-0"W x 64'-0"D**

<i>Living Room</i>	<i>18'-2" x 16'-8"</i>	<i>Bedroom #3</i>	<i>11'-6" x 11'-0"</i>
<i>Kitchen</i>	<i>11'-6" x 15'-6"</i>	<i>Bedroom #4</i>	<i>11'-6" x 11'-0"</i>
<i>Dining</i>	<i>12'-0" x 14'-0"</i>	<i>Bonus Room</i>	<i>12'-0" x 18'-6"</i>
<i>Nook</i>	<i>15'-0" x 9'-6"</i>	<i>Office</i>	<i>15'-0" x 15'-6"</i>
<i>Master Bedroom</i>	<i>15'-0" x 14'-0"</i>	<i>Garage</i>	<i>23'-0"/24'-0" x 36'-4"/38'-4"</i>
<i>Bedroom #2</i>	<i>11'-6" x 13'-4"</i>	<i>"All dimensions are approximate"</i>	



NOTE: Artist's renderings do not reflect actual home specifications.







# CHANCELLOR (Front)

**4749 SQ. FT.**  
**58'-0"W x 72'-0"D**  
**Main Floor**

Living Room	16'-0" x 18'-6"
Kitchen	20'-0" x 18'-0"
Dining	16'-0" x 14'-6"
Den	16'-0" x 14'-6"
Office	13'-0" x 18'-6"
Garage	35'-0" x 24'-0" / 26'-0"

*"All dimensions are approximate"*



**Main Floor**  
 2388 Sq. Ft.



NOTE: Artist's renderings do not reflect actual home specifications.





## CHANCELLOR (Rear)



### **Second Floor**

Master Bedroom	16'-0" x 18'-0"
Bedroom #2	12'-6" x 12'-6"
Bedroom #3	12'-6" x 12'-6"
Bedroom #4	13'-0" x 12'-6"
Guest Room	12'-0" x 16'-0"
Play Room	14'-6" x 11'-6"

*"All dimensions are approximate"*

**Second Floor**  
2361 Sq. Ft.

NOTE: Artist's renderings do not reflect actual home specifications.





# KIMBALL

**4750 SQ. FT.**  
**93'-0"W x 77'-0"D**

Living Room	15'-0" x 17'-0"	Bedroom #2	11'-0" x 13'-0"
Great Room	20'-0" x 20'-0"	Bedroom #3	11'-0" x 13'-0"
Kitchen	14'-0" x 19'-0"	Bedroom #4	11'-0" x 11'-0"
Dining	11'-0" x 16'-0"	Guest Room	11'-0" x 15'-0"
Nook	12'-0" x 13'-6"	Study	11'-0" x 17'-0"
Master Bedroom	16'-6" x 18'-0"	Garage	24'-0"/26'-0" x 35'-0"
		Shop	12'-0" x 7'-6"

*"All dimensions are approximate"*



**Main Floor**  
2850 Sq. Ft.



**Second Floor**  
1900 Sq. Ft.



NOTE: Artist's renderings do not reflect actual home specifications.



# SECONDARY DWELLINGS



Name	SQ. FT.	Page No.
Aries	620	104
Taurus	680	105
Mensa	720	106
Libra	863	107
Perseus	875	108
Pisces	1,060	109
Thorington	920	110
Newcastle	1,075	111
Southport	1,631	112



2ND DWELLINGS





# ARIES

**620 SQ. FT.**  
**24'-0"W x 30'-0"D**

Living Room	13'-6" x 12'-0"
Kitchen	10'-0" x 9'-10"
Dining	10'-0" x 8'-5"
Bedroom	11'-8" x 10'-8"

*"All dimensions are approximate"*



**\*\* Available as RTM \*\***

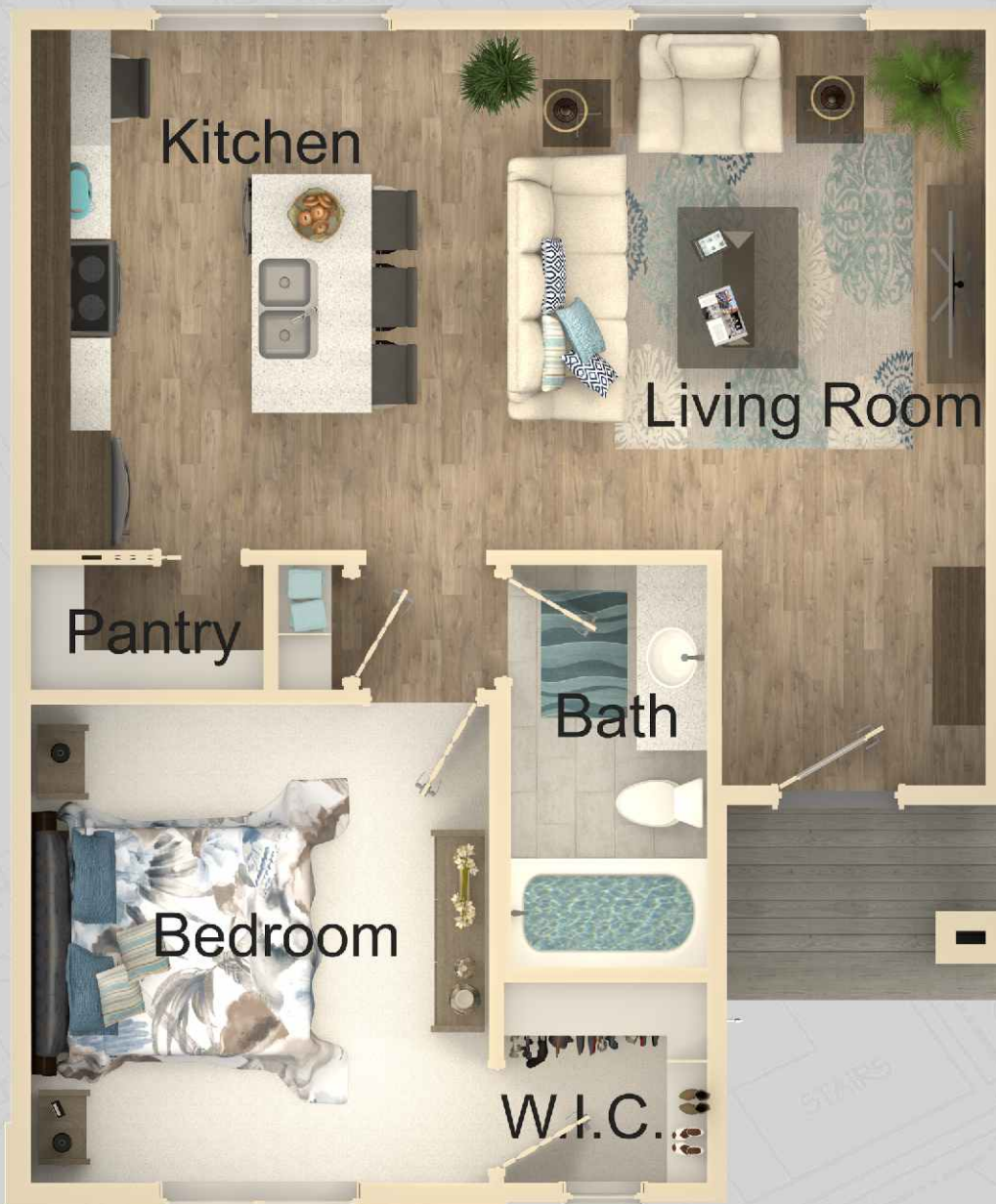
*NOTE: Artist's renderings do not reflect actual home specifications.*







# TAURUS



**680 SQ. FT.**  
**25'-0"W x 30'-0"D**

Living Room	14'-6" x 13'-2"
Kitchen	9'-6" x 12'-2"
Bedroom	11'-6" x 12'-0"
<i>"All dimensions are approximate"</i>	

**\*\* Available as RTM \*\***

NOTE: Artist's renderings do not reflect actual home specifications.





# MENSA

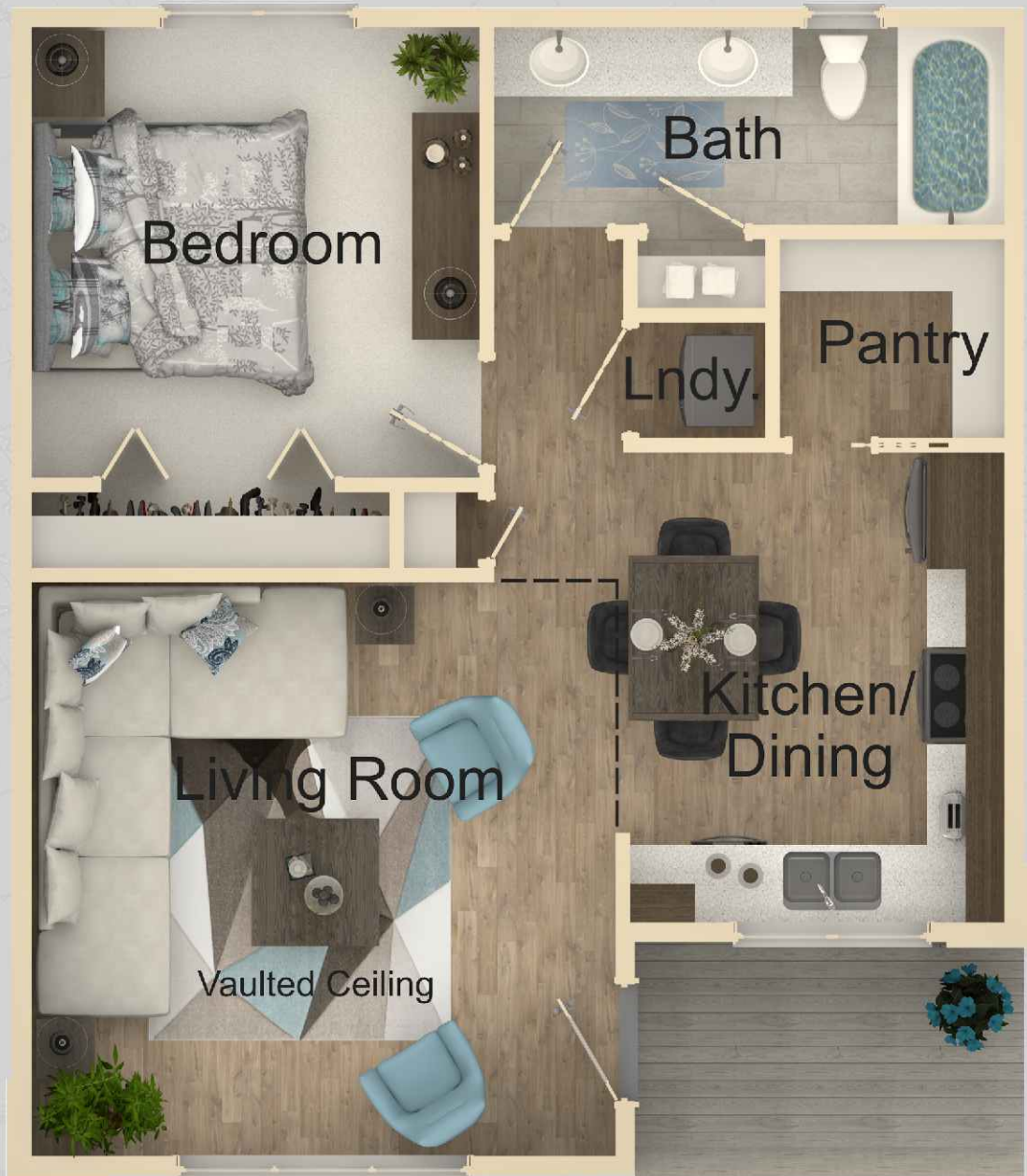
**720 SQ. FT.**  
**26'-0"W x 30'-0"D**

Living Room 15'-0" x 14'-10"

Kitchen/Dining 10'-0" x 12'-2"

Bedroom 11'-6" x 11'-6"

*"All dimensions are approximate"*



**\*\* Available as RTM \*\***

NOTE: Artist's renderings do not reflect actual home specifications.







# LIBRA

**863 SQ. FT.**  
**22'-0"W x 26'-0"D**

Living Room	13'-0" x 11'-6"	Dining	8'-0" x 9'-6"
Kitchen	8'-6" x 13'-6"	Bedroom	10'-8" x 13'-0"

*"All dimensions are approximate"*



**Main Floor**  
524 Sq.Ft.



**Second Floor**  
339 Sq.Ft.

**\*\* Available as RTM \*\***

NOTE: Artist's renderings do not reflect actual home specifications.







# PRESEUS

**875 SQ. FT.**  
**30'-0"W x 30'-6"D**

Living Room	16'-0" x 12'-2"
Kitchen/Dining	13'-0" x 14'-8"
Bedroom #1	10'-0" x 12'-2"
Bedroom #2	10'-0" x 12'-2"

*"All dimensions are approximate"*



**\*\* Available as RTM \*\***

*NOTE: Artist's renderings do not reflect actual home specifications.*





# PISCES



**1060 SQ. FT.**  
**36'-0"W x 32'-0"D**

Living Room	18'-0" x 15'-0"
Kitchen	10'-4" x 12'-0"
Dining	10'-0" x 8'-6"
Bedroom #1	12'-0" x 10'-0"
Bedroom #2	12'-0" x 12'-0"

*"All dimensions are approximate"*

**\*\* Available as RTM \*\***

NOTE: Artist's renderings do not reflect actual home specifications.





# THORINGTON

**920 SQ. FT.**  
**36'-0"W x 28'-0"D**

Living Room	13'-6" / 9'-6" x 15'-8" / 10'-8"	Bedroom #1	9'-2" x 10'-0"
Kitchen	9'-6" x 12'-2"	Bedroom #2	9'-2" x 10'-0"
Dining	8'-0" x 13'-2"	Garage	32'-0" x 28'-0"

*\*All dimensions are approximate\**







# NEWCASTLE

**1075 SQ. FT.**  
**38'-0"W x 30'-0"D**

Living Room	14'-0" x 14'-4"	Bedroom #2	13'-10" x 12'-0"
Kitchen/ Dining	12'-5" x 10'-0"/6'-1"	Bedroom #3	10'-0" x 14'-4"
Master Bedroom	14'-10" x 14'-3"	Garage	38'-0" x 30'-0"

*"All dimensions are approximate"*



NOTE: Artist's renderings do not reflect actual home specifications.





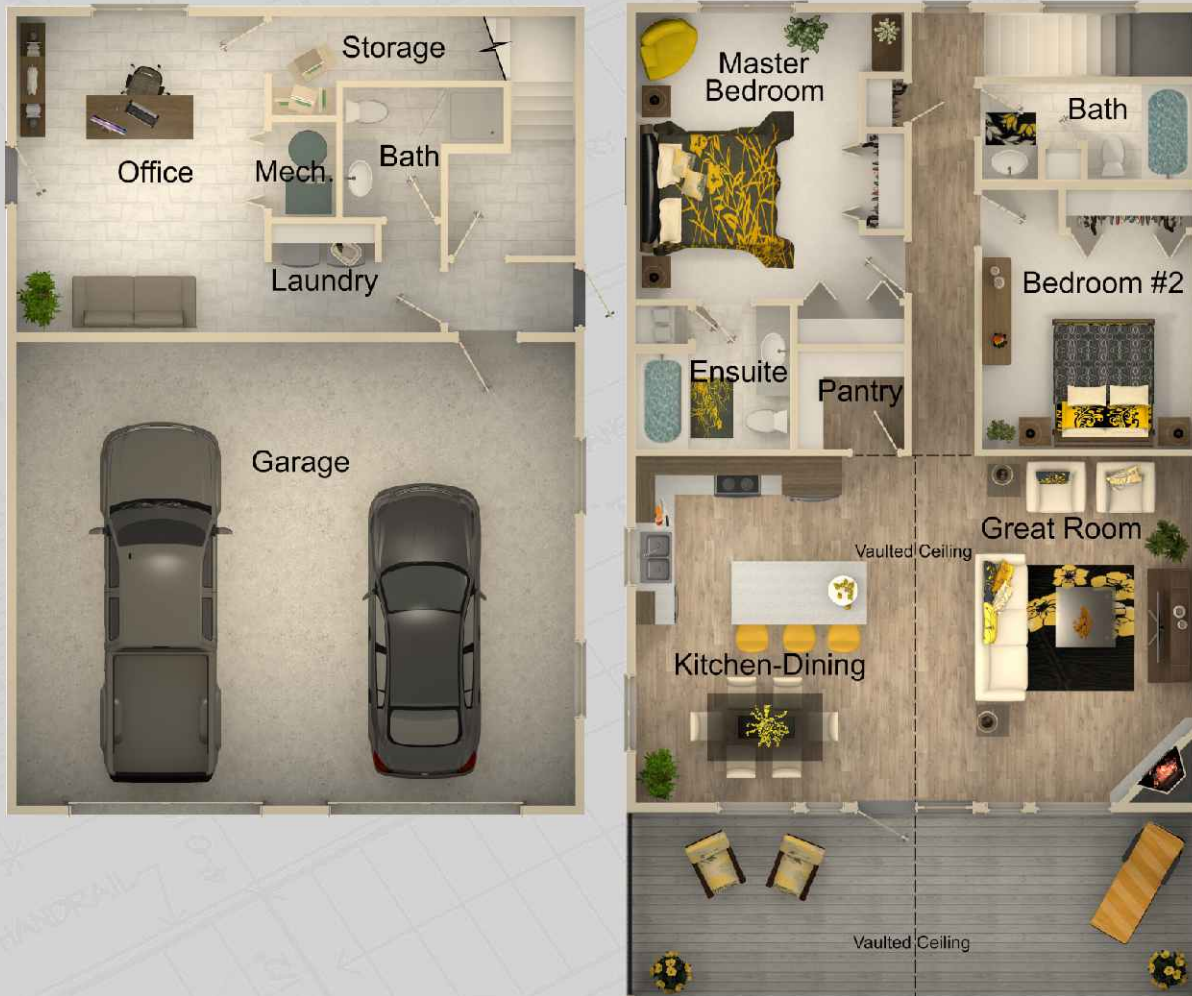


# SOUTHPORT

**1631 SQ. FT.**  
**30'-0"W x 42'-0"D**

Great Room	17'-0" x 17'-0"	Bedroom #2	11'-0" x 11'-2"
Kitchen/Dining	11'-2" x 18'-0"	Office	12'-10" x 16'-5"
Master Bedroom	11'-7" x 14'-10"	Garage	30'-0" x 24'-1"

*"All dimensions are approximate"*



NOTE: Artist's renderings do not reflect actual home specifications.



# DUPLEXES



Name	SQ. FT.	Page No.
Bayfield	971/1,059	114
Vermilion	1,041/1,214	115
Apex	1,210	116
Rockford	1,519	117
Ridgedale	1,976/1,990	118



DUPLEXES





# BAYFIELD

**Unit A 971 SQ. FT.**  
**28'-0"W x 56'-0"D**

Living Room	15'-1" x 12'-0" / 13'-8"
Kitchen	10'-4" x 9'-0"
Dining	15'-1" x 8'-0"
Master Bedroom	12'-0" x 12'-6"
Bedroom #2	12'-4" x 9'-0"
Garage	12'-0" x 22'-0"

*"All dimensions are approximate"*

**Unit B 1059 SQ. FT.**  
**28'-0"W x 54'-0"D**

Living Room	14'-7" x 13'-4"
Kitchen	11'-7" x 10'-0"
Dining	11'-7" x 8'-0"
Master Bedroom	12'-1" x 12'-9"
Bedroom #2	10'-0" x 9'-0" / 10'-8"
Garage	12'-20" x 22'-0"

*"All dimensions are approximate"*



**Unit A**  
971 Sq.Ft.

**Unit B**  
1059 Sq.Ft.





# VERMILION

## Unit A 1043 SQ. FT. 34'-0"W x 50'-0"D

Living Room	12'-0" x 19'-0"
Kitchen	9'-6" x 8'-4"
Nook	9'-6" x 8'-11"
Master Bedroom	10'-11" x 11'-0"
Bedroom #2	9'-6" x 11'-0"
Garage	20'-0" x 22'-0"

"All dimensions are approximate"

## Unit B 1214 SQ. FT. 38'-0"W x 50'-0"D

Living Room	12'-0" x 15'-0"
Kitchen/Nook	16'-7" x 10'-0"
Dining	14'-4" x 9'-6"
Master Bedroom	10'-11" x 14'-6"
Bedroom #2	8'-9" x 10'-9"
Garage	21'-0" x 22'-0"

"All dimensions are approximate"



**Unit A**  
1043 Sq. Ft.

**Unit B**  
1214 Sq. Ft.

NOTE: Artist's renderings do not reflect actual home specifications.





# APEX

## Unit A & B 1210 SQ. FT. 22'-0"W x 28'-0"D

Living Room	12'-8" x 16'-7"
Kitchen	8'-2" x 9'-9"
Dining	10'-0" x 10'-0"
Master Bedroom	10'-0" x 14'-2"
Bedroom #2	10'-7" x 10'-10"
<i>"All dimensions are approximate"</i>	



**Unit A**  
616 Sq.Ft.  
Main Floor



**Unit A**  
594 Sq.Ft.  
Second Floor





# ROCKFORD



**Unit A**  
828 Sq.Ft.

**Unit B**  
828 Sq.Ft.

**Main Floor**



**Unit A**  
691 Sq.Ft.

**Unit B**  
691 Sq.Ft.

**Second Floor**

**Unit A & B**  
**1519 SQ. FT.**  
**16'-3"W x 55'-0"D**

Living Room	11'-7" x 13'-3"
Kitchen	10'-8" x 12'-6"
Dining	11'-7" x 8'-5"
Master Bedroom	11'-7" x 13'-0"
Bedroom #2	9'-8" x 10'-4"
Bedroom #3	10'-0" x 9'-9"
Den	11'-7" x 9'-0"

*"All dimensions are approximate"*

NOTE: Artist's renderings do not reflect actual home specifications.







# RIDGEDALE

## UNIT A 1976 SQ. FT. 35'-0"W x 50'-0"D

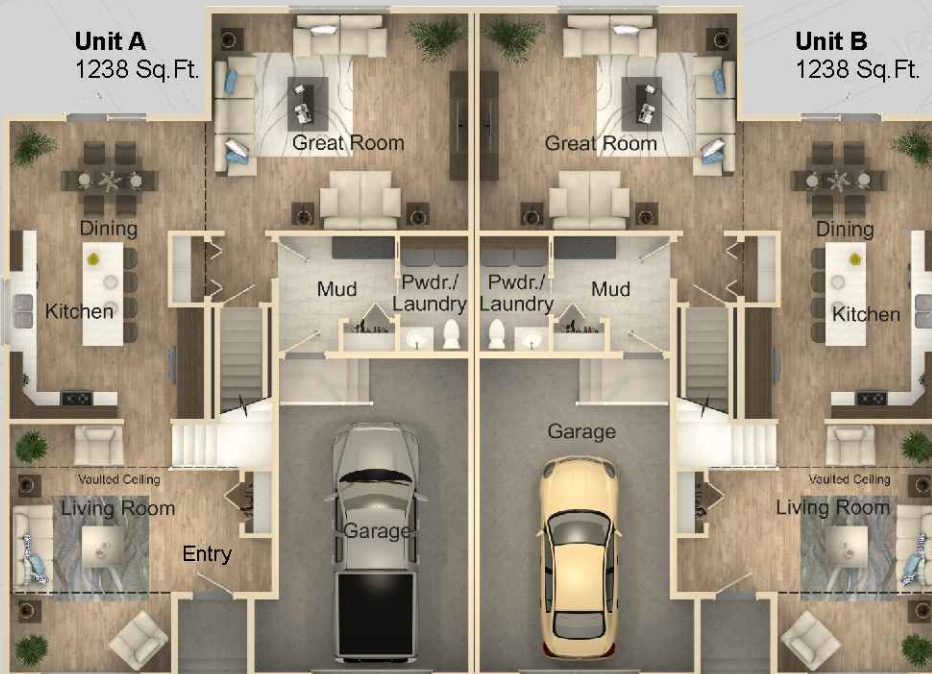
Living Room	12'-0" x 18'-6"
Kitchen	11'-10" x 14'-0"
Dining	14'-6" x 8'-2"
Great Room	19'-2" x 16'-2"
Master Bedroom	14'-2" x 13'-0"
Bedroom #2	9'-5" x 11'-0"
Bedroom #3	9'-5" x 11'-0"
Garage	14'-2" x 24'-0"

"All dimensions are approximate"

## UNIT B 1990 SQ. FT. 35'-0"W x 50'-0"D

Living Room	12'-0" x 18'-6"
Kitchen	11'-10" x 14'-0"
Dining	14'-6" x 8'-2"
Great Room	19'-2" x 16'-2"
Master Bedroom	14'-2" x 14'-0"
Bedroom #2	9'-5" x 11'-0"
Bedroom #3	9'-5" x 11'-0"
Garage	14'-2" x 24'-0"

"All dimensions are approximate"



Main Floor



Second Floor



# COTTAGES



Name	SQ. FT.	Page No.
Cottonwood	704	120
Norfolk	880	121
Sylvan	936	122
Sutton	1,016	123
Summerset	1,120	124
Everest	1,161	125
Glenmore	1,340	126
Willowbrook	1,410	127
Jasper	1,538	128
Williamsburg	1,560	129
Kootenay	1,666	130
Timberview	1,679	131
River Ridge	1,680	132
Chateau Ridge	1,817	133







# COTTONWOOD

**704 SQ. FT.**  
**28'-0"W x 28'-0"D**

Living Room	12'-0" x 11'-4"
Kitchen	8'-0" x 7'-5"
Dining	6'-11" x 7'-5"
Master Bedroom	10'-1" x 14'-8"
Bedroom #2	8'-11" x 9'-6"

*"All dimensions are approximate"*



**\*\* Available as RTM and Self Contained\*\***

NOTE: Artist's renderings do not reflect actual home specifications.





# NORFOLK



**Main Floor**  
640 Sq.Ft.



**Second Floor**  
240 Sq.Ft.

**880 SQ. FT.**  
**20'-0"W x 32'-0"D**

Great Room 15'-3" x 11'-1"

Kitchen 9'-4" x 8'-1"

Master Bedroom 12'-0" x 11'-6"

Bedroom #2 9'-0" x 9'-0"

*"All dimensions are approximate"*

**\*\* Available as RTM and Self Contained \*\***

NOTE: Artist's renderings do not reflect actual home specifications.







# SYLVAN

**936 SQ. FT.**  
**26'-0"W x 36'-0"D**

Living Room	12'-6" x 15'-2"
Kitchen	12'-6" x 9'-6"
Dining	12'-6" x 8'-0"
Master Bedroom	9'-8" x 11'-4"
Bedroom #2	9'-6" x 10'-0"

*"All dimensions are approximate"*



**\*\* Available as RTM \*\***

*NOTE: Artist's renderings do not reflect actual home specifications.*





# SUTTON



**1016 SQ. FT.**  
**28'-0"W x 36'-0"D**

Living Room	13'-6" x 12'-6"
Kitchen	12'-2" x 6'-8"
Dining	9'-4" x 12'-6"
Master Bedroom	12'-2" x 10'-0"
Bedroom #2	12'-2" x 10'-0"

*"All dimensions are approximate"*

**\*\* Available as RTM \*\***

NOTE: Artist's renderings do not reflect actual home specifications.





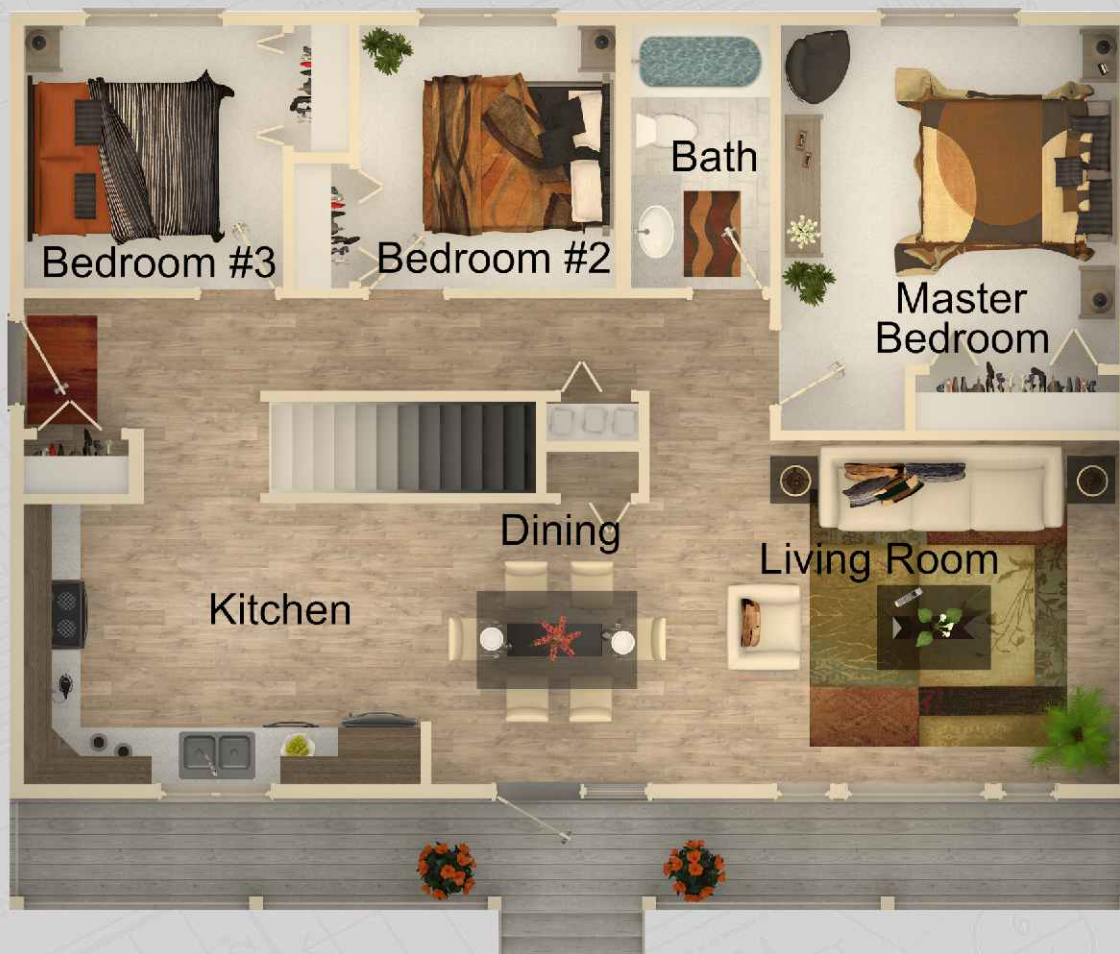


# SUMMERSET

**1120 SQ. FT.**  
**40'-0"W x 28'-0"D**

Living Room	14'-5" x 12'-3"	Master Bedroom	12'-0" x 12'-0"
Kitchen	14'-0" x 10'-0"	Bedroom #2	9'-2" x 9'-3"
Dining	10'-0" x 10'-0"	Bedroom #3	9'-2" x 9'-3"

*"All dimensions are approximate"*



**\*\* Available as RTM \*\***

*NOTE: Artist's renderings do not reflect actual home specifications.*





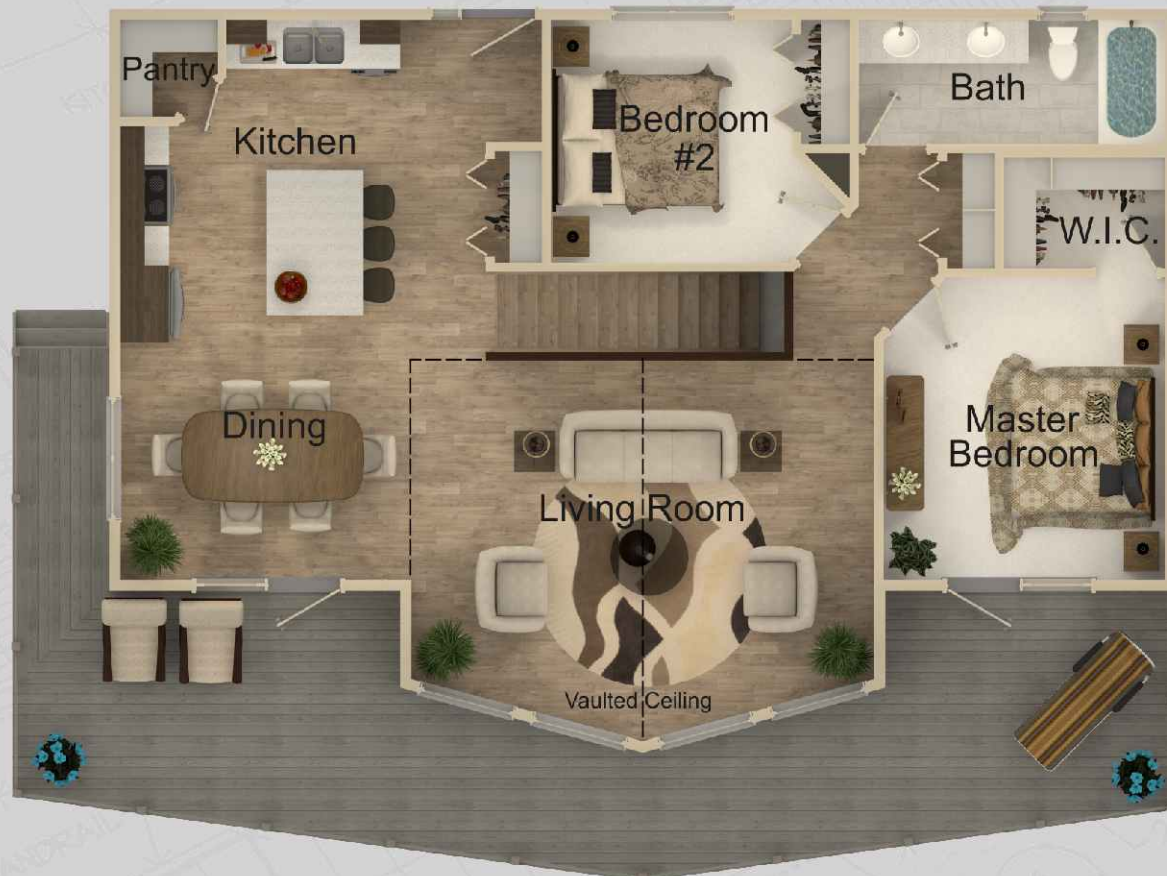


# EVEREST

**1161 SQ. FT.**  
**44'-0"W x 30'-6"D**

Living Room	19'-0" x 13'-2" / 15'-8"	Master Bedroom	11'-8" x 12'-6"
Kitchen	11'-6" x 13'-0"	Bedroom #2	10'-0" x 10'-0"
Dining	12'-0" x 10'-0"		

*"All dimensions are approximate"*



**\*\* Available as RTM \*\***

NOTE: Artist's renderings do not reflect actual home specifications.





# GLENMORE

**1340 SQ. FT.**  
**44'-0"W x 34'-0"D**

Living Room	17'-0" x 17'-0"	Dining	12'-6" x 13'-0"
Kitchen	12'-6" x 11'-0"	Master Bedroom	12'-6" x 12'-0"
<i>"All dimensions are approximate"</i>		Bedroom #2	12'-0" x 10'-0"



**\*\* Available as RTM \*\***

*NOTE: Artist's renderings do not reflect actual home specifications.*







# WILLOWBROOK



**1410 SQ. FT.**  
**30'-0"W x 50'-0"D**

Living Room	14'-0" x 14'-6"
Kitchen	8'-9" x 13'-0"
Dining	14'-0" / 12'-0" x 9'-7"
Master Bedroom	12'-4" x 12'-0"
Bedroom #2	10'-6" x 8'-8"
Bedroom #3	10'-6" x 10'-5"

*"All dimensions are approximate"*

**\*\* Available as RTM \*\***

NOTE: Artist's renderings do not reflect actual home specifications.





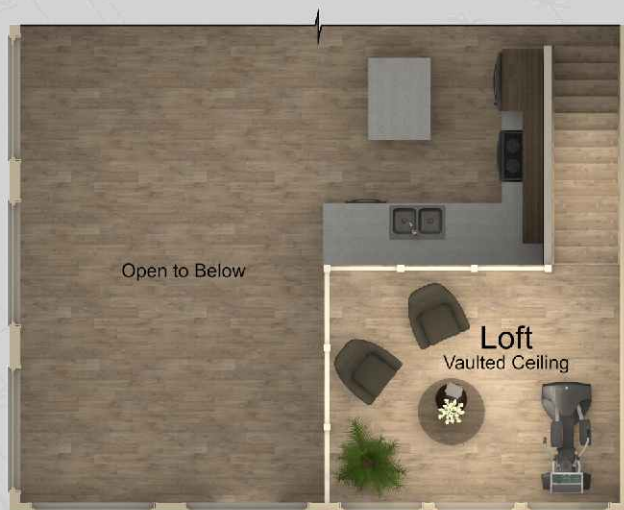


# JASPER

**1538 SQ. FT.**  
**44'-0"W x 36'-0"D**

Great Room	14'-7" x 23'-0"
Kitchen	10'-7" x 10'-10"
Dining	14'-3" x 11'-2"
Master Bedroom	13'-5" x 11'-0"
Bedroom #2	11'-0" x 11'-7"
Loft	14'-0" x 11'-6"

*"All dimensions are approximate"*



**Second Floor**  
178 Sq.Ft.



**Main Floor**  
1360 Sq.Ft.

**\*\* Available as RTM \*\***

*NOTE: Artist's renderings do not reflect actual home specifications.*







# WILLIAMSBURG

**1560 SQ. FT.**  
**28'-0"W x 37'-0"D**

Living Room	13'-4" x 17'-9"	Master Bedroom	13'-2" x 11'-8"
Kitchen	9'-0" x 8'-7"	Bedroom #2	10'-10" x 14'-0"
Dining	13'-4" x 12'-6"/9'-6"	Bedroom #3	13'-1" x 10'-0"
<i>"All dimensions are approximate"</i>		Loft	14'-10" x 7'-1"



**Main Floor**  
994 Sq.Ft.



**Second Floor**  
566 Sq.Ft.

**\*\* Available as RTM \*\***

NOTE: Artist's renderings do not reflect actual home specifications.





# KOOTENAY

**1666 SQ. FT.**  
**45'-0"W x 30'-0"D**

Living Room	23'-0" x 12'-10"	Master Bedroom	14'-4" x 11'-10"
Kitchen	10'-6" x 10'-6"	Bedroom #2	8'-6" x 12'-0"
Dining	12'-0" x 12'-6"	Bedroom #3	10'-5" x 12'-0"

*"All dimensions are approximate"*



**\*\* Available as RTM \*\***

NOTE: Artist's renderings do not reflect actual home specifications.







# TIMBERVIEW

**1679 SQ. FT.**  
**30'-0"W x 42'-0"D**

Living Room	17'-0"/15'-0" x 19'-0"	Master Bedroom	13'-0" x 18'-2"
Kitchen	12'-0" x 12'-4"	Bedroom #2	11'-0" x 10'-0"
Dining	12'-0" x 9'-0"	Bedroom #3	11'-8" x 10'-6"

*"All dimensions are approximate"*



**Main Floor**  
1260 Sq.Ft.



**Second Floor**  
419 Sq.Ft.

**\*\* Available as RTM \*\***

*NOTE: Artist's renderings do not reflect actual home specifications.*





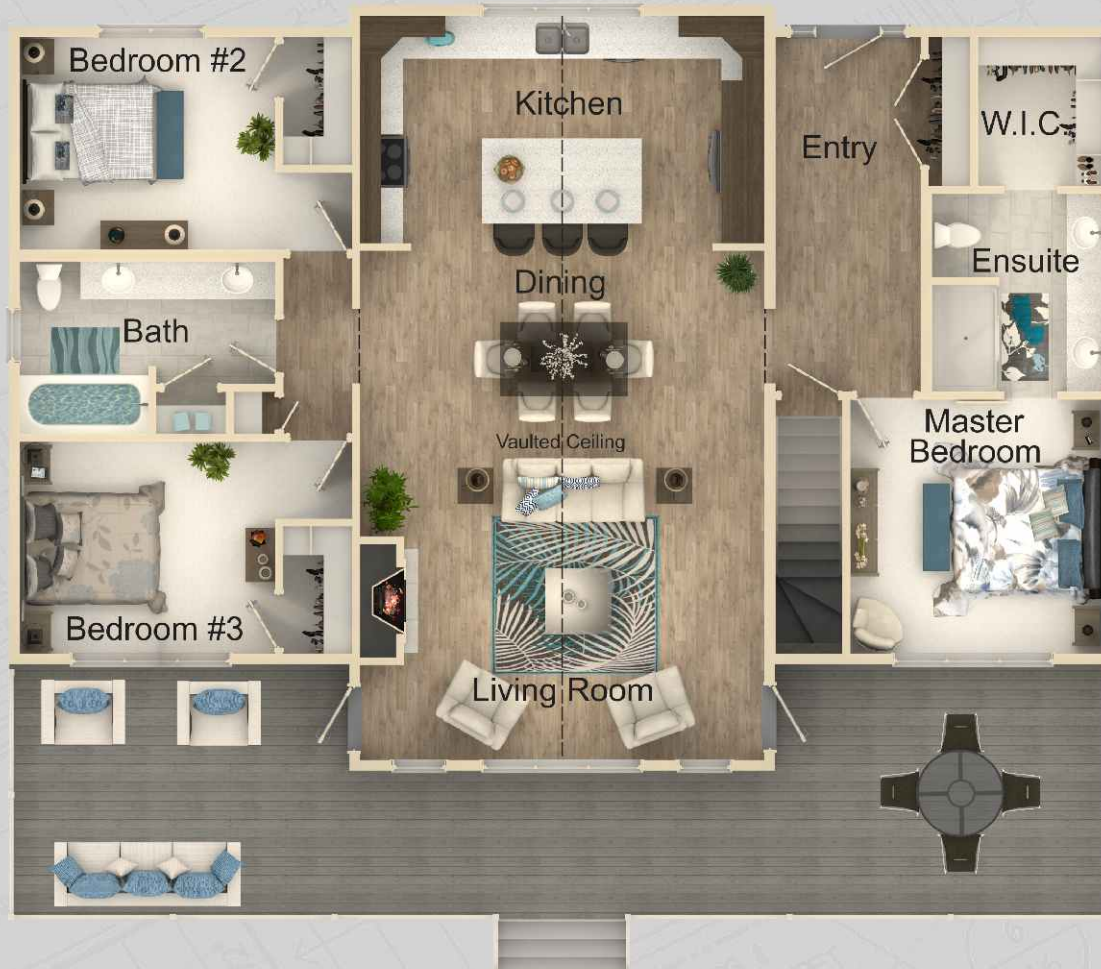


# RIVER RIDGE

**1680 SQ. FT.**  
**52'-0"W x 36'-0"D**

Living Room	19'-0" x 15'-0"	Master Bedroom	12'-0" x 12'-0"
Kitchen	19'-0" x 11'-0"	Bedroom #2	12'-0" x 10'-0"
Dining	19'-0" x 9'-0"	Bedroom #3	12'-0" x 10'-0"

*"All dimensions are approximate"*



**\*\* Available as RTM \*\***

*NOTE: Artist's renderings do not reflect actual home specifications.*







# Index

Abilene.....	1,503.....	32	Embrook.....	1,440.....	28	Paragon.....	1,380.....	27
Acacia.....	952.....	8	Everest.....	1,161.....	125	Perseus.....	875.....	108
Aldwyn.....	1,498.....	72	Fairfield.....	2,076.....	57	Pisces.....	1,060.....	109
Alida.....	1,273.....	16	Fairmont.....	2,316.....	85	Rainier.....	1,326.....	21
Allen.....	1,004.....	66	Fulton.....	1,539.....	77	Raymond.....	2,464.....	63
Apex.....	1,210.....	116	Garrick.....	1,200.....	68	Richmond.....	1,566.....	36
April.....	1,080.....	11	Glenmore.....	1,340.....	126	Ridgedale.....	1,976/1,990.....	118
Ardmore.....	2,123.....	58	Hailey.....	1,268.....	69	River Ridge.....	1,680.....	132
Aries.....	620.....	104	Harlowe.....	1,600.....	40	Rockford.....	1,519.....	117
Arizona.....	2,448.....	90	Havenport.....	1,360.....	24	Rocklyn.....	1,274.....	18
Ashbury.....	2,521.....	93	Hawksdale.....	1,344.....	22	Rowan.....	1,176.....	14
Aurora.....	1,767.....	49	Heston.....	1,623.....	42	Royale.....	2,783.....	96
Bayfield.....	971/1,059.....	114	Inglewood.....	1,804.....	80	Rutherford.....	1,380.....	71
Blackburn.....	2,500.....	64	Jackson.....	1,494.....	31	Ryan.....	1,584.....	38
Blue Ridge.....	1,363.....	25	Jacob.....	1,380.....	26	Santana.....	2,719.....	95
Branston.....	2,618.....	94	Jasper.....	1,538.....	128	Sienna.....	2,401.....	87
Brantwell.....	1,450.....	29	Kensington.....	1,798.....	51	Southport.....	1,631.....	112
Bronson.....	1,684.....	45	Keystone.....	1,350.....	70	Stratton.....	1,347.....	75
Brooklyn.....	1,576.....	37	Kimball.....	4,750.....	102	Summerset.....	1,120.....	124
Brookside.....	2,200.....	59	Knox.....	1,236.....	15	Sutton.....	1,016.....	123
Calder.....	1,900.....	54	Kootenay.....	1,666.....	130	Sycamore.....	1,489.....	30
Camile.....	1,147.....	67	Leighton.....	2,507.....	92	Sydney.....	1,537.....	33
Carmichael.....	1,835.....	81	Lethbridge.....	1,669.....	78	Sylvan.....	936.....	122
Castleguard.....	1,288.....	19	Libra.....	863.....	107	Taran.....	1,120.....	12
Chancellor.....	4,749.....	100	Manitou.....	2,369.....	61	Taurus.....	680.....	105
Chateau Ridge.....	1,817.....	133	McKenzie.....	1,778.....	50	Thompson.....	2,950.....	98
Chestnut.....	1,587.....	39	McKinley.....	1,064.....	10	Thorington.....	920.....	110
Chestermere.....	2,422.....	88	Meadowbrook.....	1,870.....	53	Timberview.....	1,679.....	131
Cheyenne.....	1,723.....	47	Mensa.....	720.....	106	Trinity.....	2,452.....	91
Citation.....	1,540.....	34	Metropolitan.....	2,064.....	83	Tryston.....	2,868.....	97
Cottonwood.....	704.....	120	Midland.....	1,604.....	41	Valemount.....	1,746.....	48
Courtney.....	1,176.....	74	Morrison.....	3,480.....	99	Vermillion.....	1,043/1,214.....	115
Cyprus.....	2,451.....	62	Newcastle.....	1,075.....	111	Victory.....	2,021.....	82
Daley.....	1,274.....	17	Nicholson.....	2,312.....	84	Wendel.....	1,744.....	79
Denton.....	1,479.....	76	Norfolk.....	880.....	121	Weston.....	1,054.....	9
Denver.....	1,124.....	13	Norquay.....	1,720.....	46	Williamsburg.....	1,560.....	129
Donovan.....	1,549.....	35	Oakville.....	1,354.....	23	Willowbrook.....	1,410.....	127
Douglas.....	1,675.....	44	Olympia.....	2,299.....	60	Wingate.....	1,814.....	52
Dryden.....	2,029.....	56	Orion.....	1,653.....	43	Winston.....	2,399.....	86
Eastwood.....	1,293.....	20	Oslo.....	1,947.....	55			



**Head Office & Factory**  
6609 - 44 Street, Lloydminster, AB T9V 2X1  
Toll Free: 1-800-661-6534

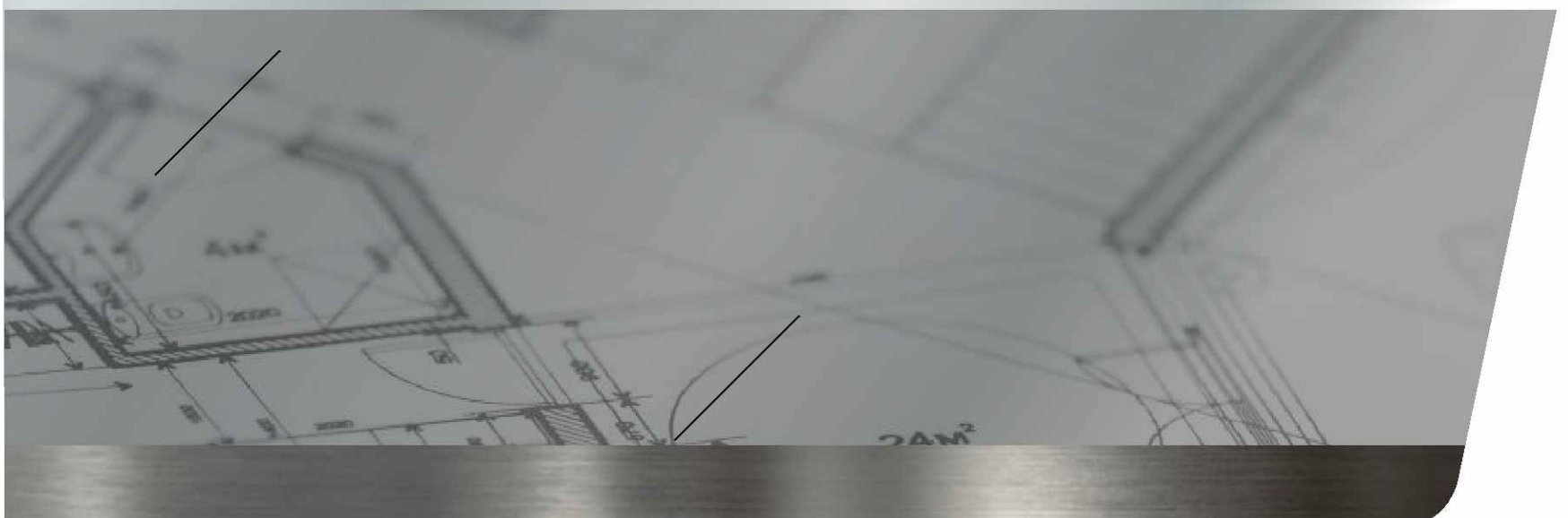
Over 100 Authorized Dealers throughout North America & Europe



*Trusted Quality and Service Since 1949*



[www.nlc.ca](http://www.nlc.ca)







# CHATEAU RIDGE

**1817 SQ. FT.**  
**26'-0"W x 36'-0"D**

Living Room	13'-2" / 12'-6" x 17'-2"	Master Bedroom	14'-4" x 14'-6"
Kitchen	11'-10" x 11'-0"	Bedroom #2	9'-6" x 10'-6"
Dining	11'-10" x 12'-0"	Bedroom #3	14'-4" x 10'-6"

*"All dimensions are approximate"*



**Main Floor**  
945 Sq.Ft.



**Second Floor**  
872 Sq.Ft.

**\*\* Available as RTM \*\***

*NOTE: Artist's renderings do not reflect actual home specifications.*







# RTM Index

Abilene.....	1,503.....	32
Acacia.....	952.....	8
April.....	1,080.....	11
Aries.....	620.....	104
Ashbury.....	2,521.....	93
Aurora.....	1,767.....	49
Blackburn.....	2,500.....	64
Blue Ridge.....	1,363.....	25
Calder.....	1,900.....	54
Castleguard.....	1,288.....	19
Chateau Ridge.....	1,817.....	133
Chestnut.....	1,587.....	39
Cottonwood.....	704.....	120
Courtney.....	1,176.....	74
Daley.....	1,274.....	17
Donovan.....	1,549.....	35
Douglas.....	1,675.....	44
Eastwood.....	1,293.....	20
Embrook.....	1,440.....	28
Everest.....	1,161.....	125
Fairmont.....	2,316.....	85
Glenmore.....	1,340.....	126
Harlowe.....	1,600.....	40
Hawksdale.....	1,344.....	22
Heston.....	1,623.....	42
Inglewood.....	1,804.....	80
Jackson.....	1,494.....	31
Jacob.....	1,380.....	26
Jasper.....	1,538.....	128
Kootenay.....	1,666.....	130

Libra.....	863.....	107
Manitou.....	2,369.....	61
McKenzie.....	1,778.....	50
McKinley.....	1,064.....	10
Meadowbrook.....	1,870.....	53
Mensa.....	720.....	106
Metropolitan.....	2,064.....	83
Midland.....	1,604.....	41
Norfolk.....	880.....	121
Norquay.....	1,720.....	46
Oakville.....	1,354.....	23
Olympia.....	2,299.....	60
Orion.....	1,653.....	43
Perseus.....	875.....	108
Pisces.....	1,060.....	109
River Ridge.....	1,680.....	132
Rowan.....	1,176.....	14
Ryan.....	1,584.....	38
Summerset.....	1,120.....	124
Sutton.....	1,016.....	123
Sycamore.....	1,489.....	30
Sylvan.....	936.....	122
Taran.....	1,120.....	12
Taurus.....	680.....	105
Timberview.....	1,679.....	131
Valemount.....	1,746.....	48
Weston.....	1,054.....	9
Williamsburg.....	1,560.....	129
Willowbrook.....	1,410.....	127
Wingate.....	1,814.....	52





# Index

Abilene.....	1,503.....	32	Embrook.....	1,440.....	28	Paragon.....	1,380.....	27
Acacia.....	952.....	8	Everest.....	1,161.....	125	Perseus.....	875.....	108
Aldwyn.....	1,498.....	72	Fairfield.....	2,076.....	57	Pisces.....	1,060.....	109
Alida.....	1,273.....	16	Fairmont.....	2,316.....	85	Rainier.....	1,326.....	21
Allen.....	1,004.....	66	Fulton.....	1,539.....	77	Raymond.....	2,464.....	63
Apex.....	1,210.....	116	Garrick.....	1,200.....	68	Richmond.....	1,566.....	36
April.....	1,080.....	11	Glenmore.....	1,340.....	126	Ridgedale.....	1,976/1,990.....	118
Ardmore.....	2,123.....	58	Hailey.....	1,268.....	69	River Ridge.....	1,680.....	132
Aries.....	620.....	104	Harlowe.....	1,600.....	40	Rockford.....	1,519.....	117
Arizona.....	2,448.....	90	Havenport.....	1,360.....	24	Rocklyn.....	1,274.....	18
Ashbury.....	2,521.....	93	Hawksdale.....	1,344.....	22	Rowan.....	1,176.....	14
Aurora.....	1,767.....	49	Heston.....	1,623.....	42	Royale.....	2,783.....	96
Bayfield.....	971/1,059.....	114	Inglewood.....	1,804.....	80	Rutherford.....	1,380.....	71
Blackburn.....	2,500.....	64	Jackson.....	1,494.....	31	Ryan.....	1,584.....	38
Blue Ridge.....	1,363.....	25	Jacob.....	1,380.....	26	Santana.....	2,719.....	95
Branston.....	2,618.....	94	Jasper.....	1,538.....	128	Sienna.....	2,401.....	87
Brantwell.....	1,450.....	29	Kensington.....	1,798.....	51	Southport.....	1,631.....	112
Bronson.....	1,684.....	45	Keystone.....	1,350.....	70	Stratton.....	1,347.....	75
Brooklyn.....	1,576.....	37	Kimball.....	4,750.....	102	Summerset.....	1,120.....	124
Brookside.....	2,200.....	59	Knox.....	1,236.....	15	Sutton.....	1,016.....	123
Calder.....	1,900.....	54	Kootenay.....	1,666.....	130	Sycamore.....	1,489.....	30
Camile.....	1,147.....	67	Leighton.....	2,507.....	92	Sydney.....	1,537.....	33
Carmichael.....	1,835.....	81	Lethbridge.....	1,669.....	78	Sylvan.....	936.....	122
Castleguard.....	1,288.....	19	Libra.....	863.....	107	Taran.....	1,120.....	12
Chancellor.....	4,749.....	100	Manitou.....	2,369.....	61	Taurus.....	680.....	105
Chateau Ridge.....	1,817.....	133	McKenzie.....	1,778.....	50	Thompson.....	2,950.....	98
Chestnut.....	1,587.....	39	McKinley.....	1,064.....	10	Thorington.....	920.....	110
Chestermere.....	2,422.....	88	Meadowbrook.....	1,870.....	53	Timberview.....	1,679.....	131
Cheyenne.....	1,723.....	47	Mensa.....	720.....	106	Trinity.....	2,452.....	91
Citation.....	1,540.....	34	Metropolitan.....	2,064.....	83	Tryston.....	2,868.....	97
Cottonwood.....	704.....	120	Midland.....	1,604.....	41	Valemount.....	1,746.....	48
Courtney.....	1,176.....	74	Morrison.....	3,480.....	99	Vermillion.....	1,043/1,214.....	115
Cyprus.....	2,451.....	62	Newcastle.....	1,075.....	111	Victory.....	2,021.....	82
Daley.....	1,274.....	17	Nicholson.....	2,312.....	84	Wendel.....	1,744.....	79
Denton.....	1,479.....	76	Norfolk.....	880.....	121	Weston.....	1,054.....	9
Denver.....	1,124.....	13	Norquay.....	1,720.....	46	Williamsburg.....	1,560.....	129
Donovan.....	1,549.....	35	Oakville.....	1,354.....	23	Willowbrook.....	1,410.....	127
Douglas.....	1,675.....	44	Olympia.....	2,299.....	60	Wingate.....	1,814.....	52
Dryden.....	2,029.....	56	Orion.....	1,653.....	43	Winston.....	2,399.....	86
Eastwood.....	1,293.....	20	Oslo.....	1,947.....	55			



## Head Office & Factory

6609 - 44 Street, Lloydminster, AB T9V 2X1

Toll Free: 1-800-661-6534

Over 100 Authorized Dealers throughout North America & Europe



*Trusted Quality and Service Since 1949*



[www.nlc.ca](http://www.nlc.ca)